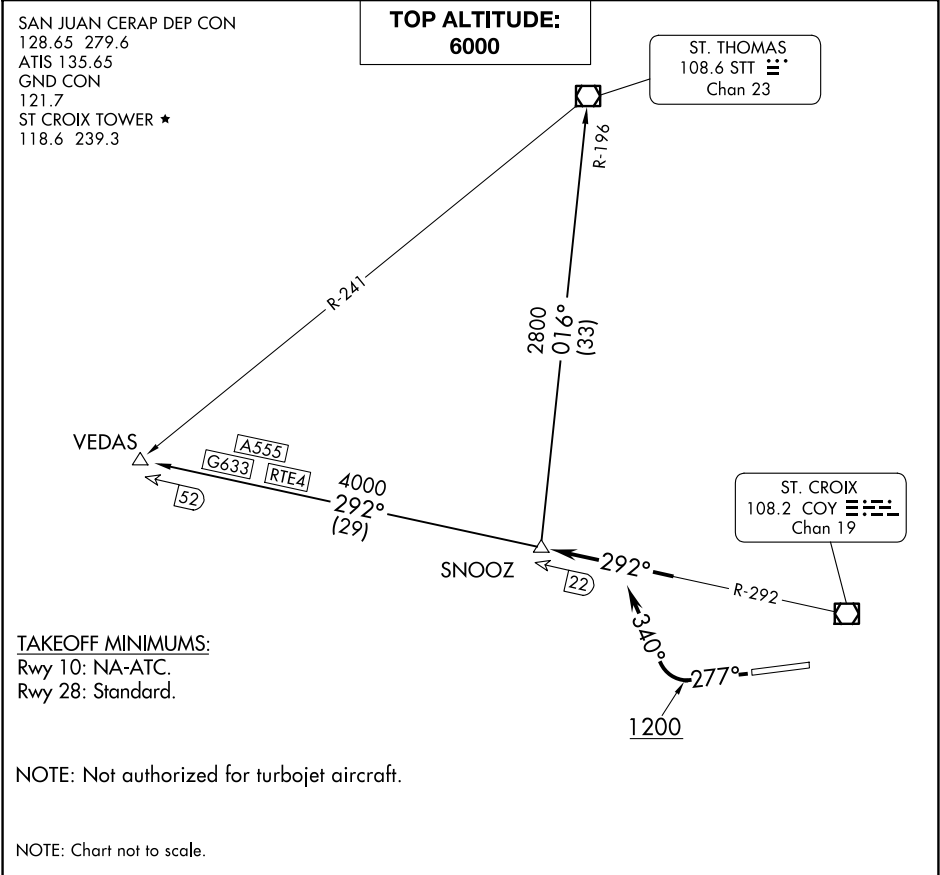


(SNOOZ5.SNOOZ) 24137
SNOOZ FIVE DEPARTURE

AL-5008 (FAA)
HENRY E ROHLSSEN (STX)(TISX)
CHRISTIANSTED, ST. CROIX, VIRGIN ISLANDS



DEPARTURE ROUTE DESCRIPTION

TAKEOFF RUNWAY 28: Climb on heading 277° to 1200, then climbing right turn on heading 340° to intercept COY VOR/DME R-292 to SNOOZ INT. Maintain 6000 or ATC assigned altitude, expect further clearance to filed altitude within ten (10) minutes after departure.

ST THOMAS TRANSITION (SNOOZ5.STT): From over SNOOZ INT on STT R-196 to STT VOR/DME.

VEDAS TRANSITION (SNOOZ5.VEDAS): From over SNOOZ INT on COY R-292 to VEDAS INT.