

VOR FKL	APP CRS	Rwy ldg	5200
109.6	187°	TDZE	1540
		Apt Elev	1540

VOR RWY 21

VENANGO RGNL (F'KL)

V

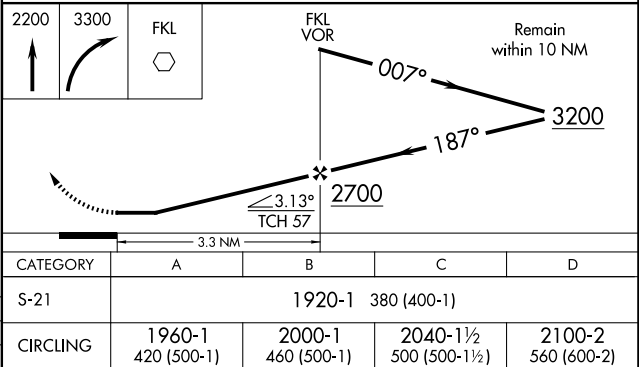
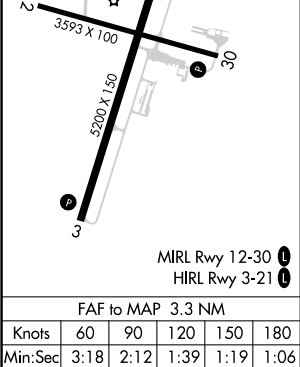
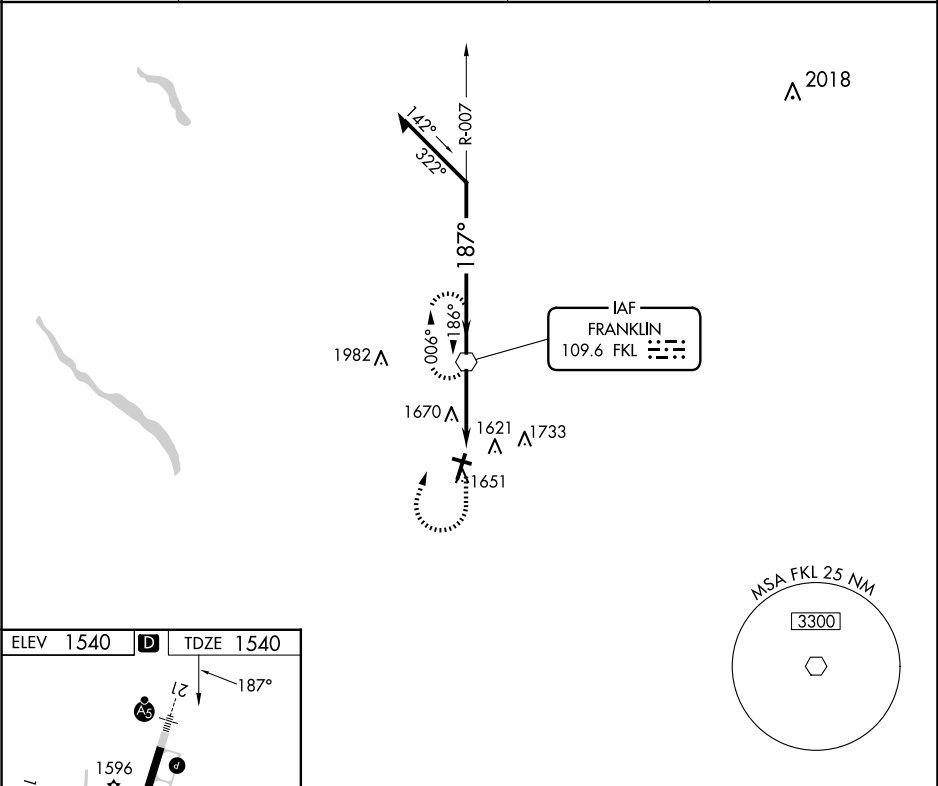
A

Inop table does not apply. When local altimeter setting not received, use Port Meadville altimeter setting and increase all MDA 80 feet and S-21 Cats C/D visibility ⅜ mile. Circling Rwy 12 NA at night. Rwy 12 helicopter visibility reduction below 1 SM NA.

MALSR

MISSED APPROACH: Climb to 2200, then climbing right turn to 3300 direct FKL VOR and hold.

AWOS-3PT 118.175	YOUNGSTOWN APP CON ★ 126.25 322.3	CLNC DEL 126.25	UNICOM 122.7 (CTAF) 0
---------------------	--------------------------------------	--------------------	--------------------------



NE-4, 07 AUG 2025 to 04 SEP 2025

NE-4, 07 AUG 2025 to 04 SEP 2025