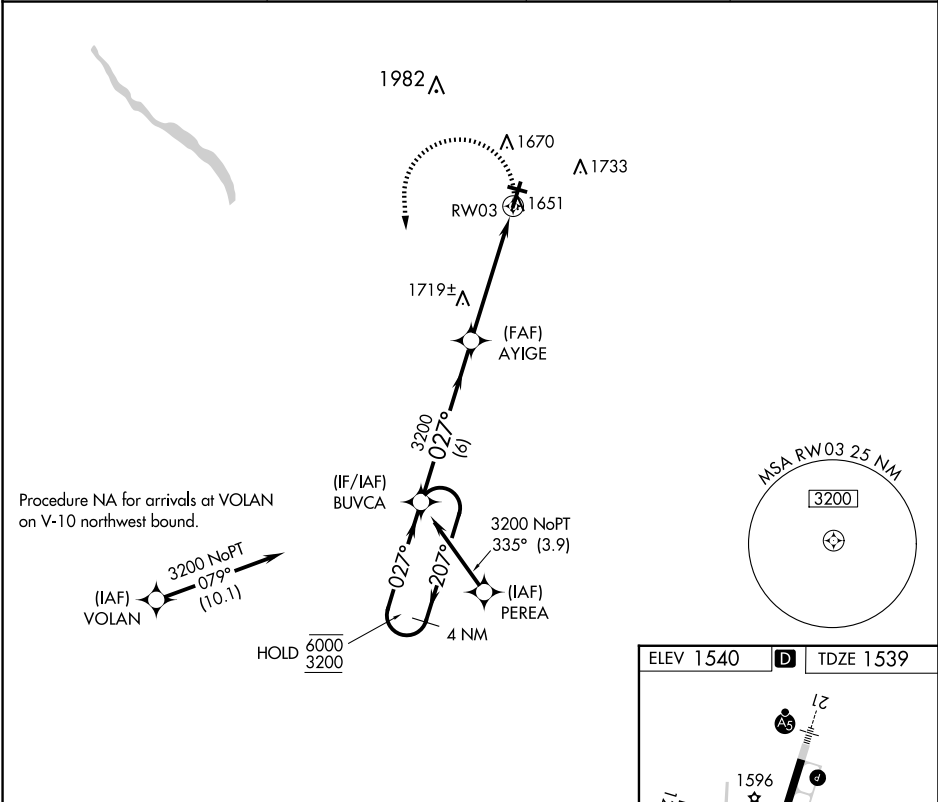


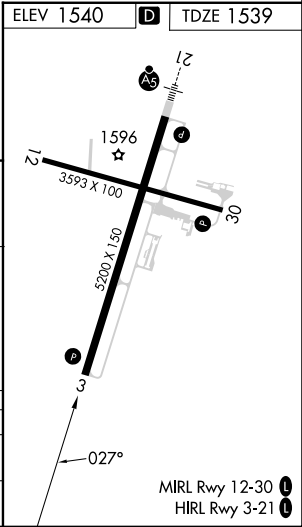
APP CRS	Rwy Idg	5200
027°	TDZE	1539
	Apt Elev	1540

RNAV (GPS) RWY 3
VENANGO RGNL (FKL)

RNP APCH.		MISSED APPROACH: Climbing left turn to 3200 direct BUVCA and hold.	
Rwy 3 helicopter visibility reduction below ¾ SM NA. Circling Rwy 12 NA at night.			
AWOS-3PT 118.175	YOUNGSTOWN APP CON ★ 126.25 322.3	CLNC DEL 126.25	UNICOM 122.7 (CTAF) 0



4 NM Holding Pattern		Visual Segment - Obstacles.		3200	BUVCA
6000 ← 207° 3200 ← 027° →		AYIGE 3200		1.3 NM to RW03	
		6 NM		3.7 NM	
				1.3	
CATEGORY	A	B	C	D	
LNAV MDA	1980-1	441 (500-1)	1980-1 ¾	441 (500-1 ¾)	
CIRCLING	1980-1 440 (500-1)	2000-1 460 (500-1)	2040-1 ½ 500 (500-1 ½)	2100-2 560 (600-2)	



NE-4, 07 AUG 2025 to 04 SEP 2025

NE-4, 07 AUG 2025 to 04 SEP 2025