

LOC I-FKL <b>110.5</b>	APP CRS <b>207°</b>	Rwy ldg TDZE <b>5200</b> Apt Elev <b>1540</b>	ILS or LOC RWY 21 VENANGO RGNL (F'KL)
---------------------------	------------------------	---	--

RADAR required to define DACCA.  
RADAR required for procedure entry.

T

A

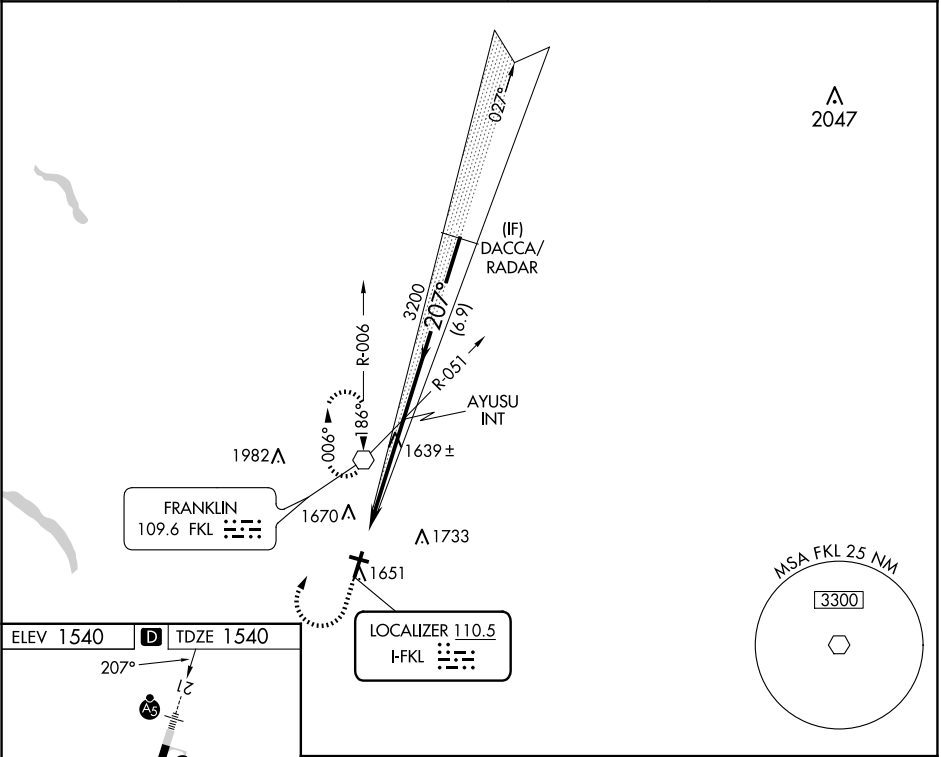
For inop ALS, increase S-LOC 21 Cat C/D visibility to 1 SM.  
Circling Rwy 12 NA at night.

MALSR

AS

MISSED APPROACH: Climb to 2200 then climbing right turn to 3400 direct FKL VOR and hold, continue climb-in-hold to 3400.

AWOS-3PT <b>118.175</b>	YOUNGSTOWN APP CON ★ <b>126.25 322.3</b>	CLNC DEL <b>126.25</b>	UNICOM <b>122.7 (CTAF) 0</b>
----------------------------	---	---------------------------	---------------------------------



ELEV 1540 D TDZE 1540

207°

1596

3593 X 100

5200 X 150

30

3

MIRL Rwy 12-30 0

HIRL Rwy 3-21 0

FAF to MAP 5 NM

Knots

60

90

120

150

180

Min:Sec

5:00

3:20

2:30

2:00

1:40

2200

3400

FKL

AYUSU INT

3200

3200

207°

3400

GS 3.00°

TCH 55

CATEGORY	A	B	C	D
S-ILS-21	1740-½ 200 (200-½)			
S-LOC-21	1900-½ 360 (400-½)		1900-⅝ 360 (400-⅝)	
CIRCLING	1960-1 420 (500-1)	2000-1 460 (500-1)	2040-1½ 500 (500-1½)	2100-2 560 (600-2)

NE-4, 07 AUG 2025 to 04 SEP 2025

NE-4, 07 AUG 2025 to 04 SEP 2025