

WAAS CH 61340 W36A	APP CRS 002°	Rwy Idg TDZE 187 Apt Elev 188
--	------------------------	---

RNAV (GPS) RWY 36

COLUMBUS-LOWNDES COUNTY (UBS)

RNP APCH.

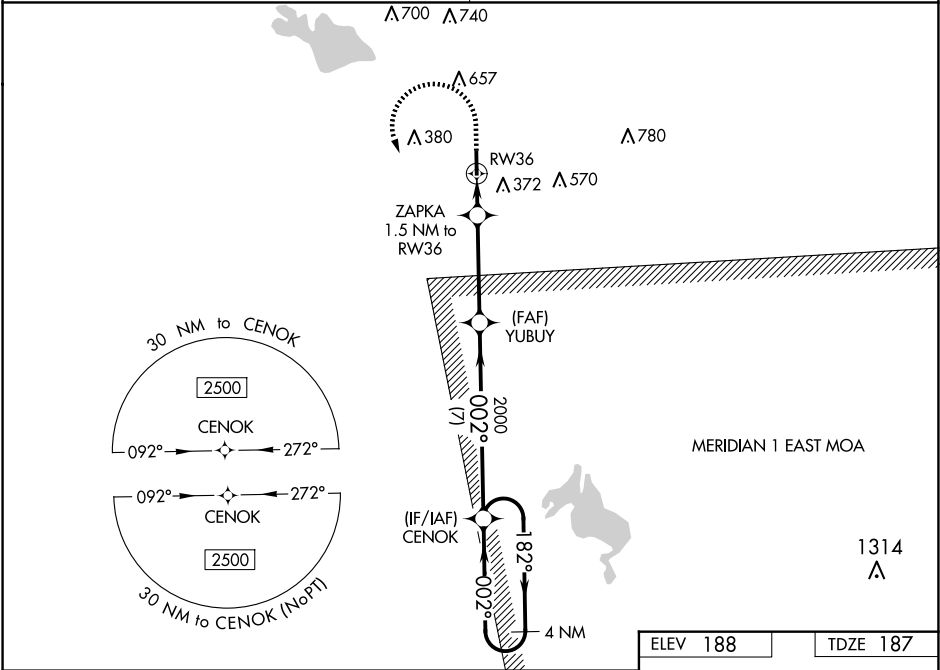
▼

▲ NA

Rwy 36 helicopter visibility reduction below ¾ SM NA. Use Columbus AFB altimeter setting; when not received, use Golden Triangle Rgnl altimeter setting and increase all DA 5 feet and all MDA 20 feet, increase LPV and LNAV/VNAV all Cats visibilities to 1½ SM. Baro-VNAV NA.

MISSED APPROACH: Climb to 740 then climbing left turn to 2500 direct CENOK and hold.

COLUMBUS APP CON ★ 135.6 323.275	UNICOM 122.8 (CTAF) 0
--	---------------------------------



VGSI and RNAV glidepath not coincident (VGSI Angle 3.00/TCH 40).

4 NM Holding Pattern

2500 ← 182° 002° →

GP 3.10° TCH 58

2000

720

740 2500 CENOK

*LNAV only.

CATEGORY	A	B	C	D
LPV DA		527-1	340 (400-1)	
LNAV/VNAV DA		526-1	339 (400-1)	
LNAV MDA	600-1 413 (500-1)		600-1½ 413 (500-1½)	
CIRCLING	760-1 572 (600-1)	780-1 592 (600-1)	1040-2½ 852 (900-2½)	1040-2¾ 852 (900-2¾)

81 4503 X 100 235 36 002° to RW36

MIRL Rwy 18-36 0

SC-4, 07 AUG 2025 to 04 SEP 2025

SC-4, 07 AUG 2025 to 04 SEP 2025