

WAAS CH 90539 W22A	APP CRS 231°	Rwy Idg TDZE Apt Elev	5001 720 720
--	------------------------	-----------------------------	---

RNAV (GPS) RWY 22

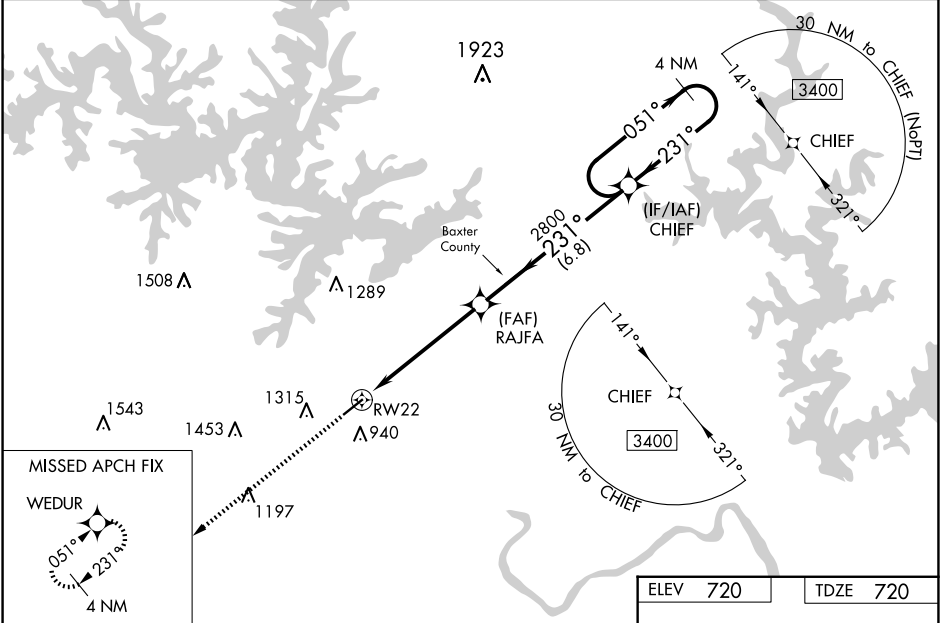
MARION COUNTY RGNL (FLP)

⚠

For uncompensated Baro-VNAV systems, LNAV/VNAV NA below -13°C (9°F) or above 54°C (130°F). DME/DME RNP-0.3 NA. Procedure NA at night. Circling NA northwest of Rwy 4-22. Rwy 22 helicopter visibility reduction below 1 SM NA.

MISSED APPROACH: Climb to 3600 direct WEDUR and hold.

AWOS-3PT 132.075	MEMPHIS CENTER 126.85 281.55	UNICOM 123.0 (CTAF) 0
----------------------------	--	---------------------------------



3600

↑

WEDUR

✦

RAJFA

2800

CHIEF

4 NM Holding Pattern

051°

→

3400

←

231°

GP 3.50°

TCH 52

231°

↗

2800

↘

5.5 NM

6.8 NM

RW22

↖

CATEGORY	A	B	C	D
LPV DA	1022-1 302 (400-1)			NA
LNAV/VNAV DA	1169-1 ³ / ₈ 449 (500-1 ³ / ₈)			NA
LNAV MDA	1320-1	600 (600-1)	1320-1 ³ / ₄ 600 (600-1 ³ / ₄)	NA
CIRCLING	1320-1	600 (600-1)	1360-1 ³ / ₄ 640 (700-1 ³ / ₄)	NA

5001 X75

231°

↗

1.3% UP

↗

MIRL Rwy 4-22

REIL Rwy 4 and 22