

WAAS CH 82640 W02A	APP CRS 018°	Rwy Idg 6011 TDZE 1359 Apt Elev 1359
--	------------------------	---

RNAV (GPS) RWY 2

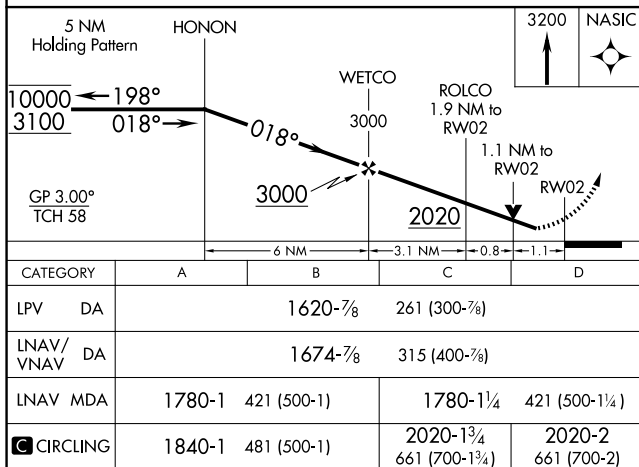
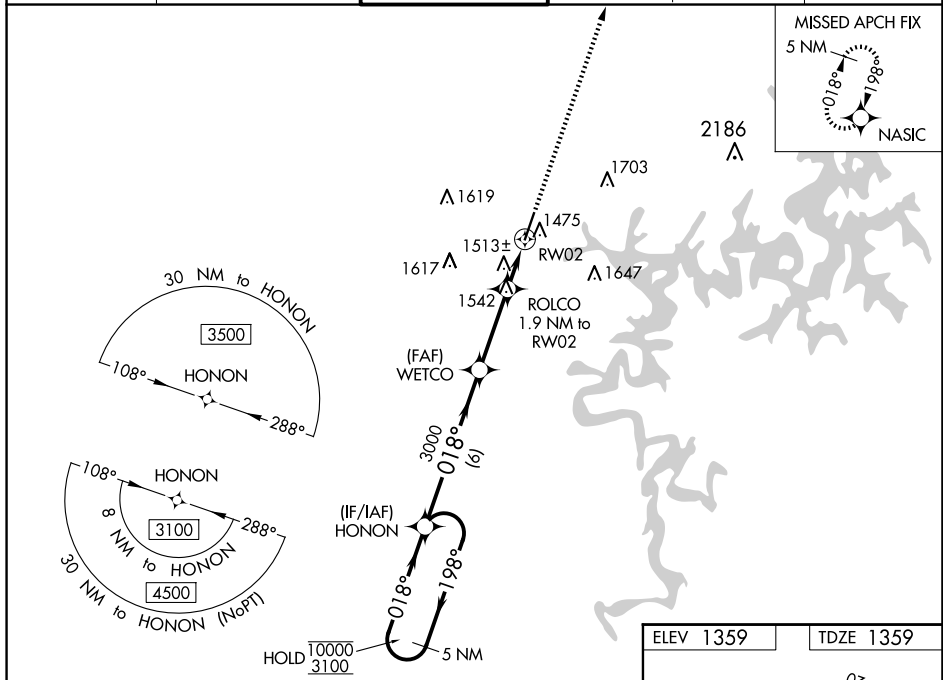
RNP APCH-GPS.




Rwy 2 helicopter visibility reduction below $\frac{3}{4}$ SM NA. For uncompensated Baro-VNAV systems, LNAV/VNAV NA below -17°C or above 54°C.

MISSED APPROACH: Climb to 3200 direct NASIC and hold.

AWOS-3PT 134.375	RAZORBACK APP CON★ 126.6 305.2	ROGERS TOWER ★ 119.375 (CTAF) 0	GND CON 118.0	CLNC DEL 121.75	CLNC DEL 121.75 (When twr dosed)
----------------------------	--	---	-------------------------	---------------------------	---



CATEGORY		A		B		C		D	
LPV	DA	1620- $\frac{7}{8}$				261 (300- $\frac{7}{8}$)			
LNAV/ VNAV	DA	1674- $\frac{7}{8}$				315 (400- $\frac{7}{8}$)			
LNAV	MDA	1780-1 421 (500-1)				1780-1 $\frac{1}{4}$ 421 (500-1 $\frac{1}{4}$)			
	CIRCLING	1840-1 481 (500-1)				2020-1 $\frac{3}{4}$ 661 (700-1 $\frac{3}{4}$)		2020-2 661 (700-2)	

