

BETHEL, ALASKA

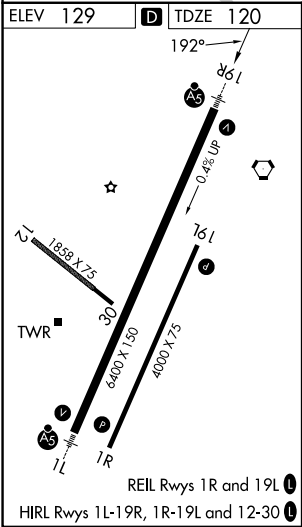
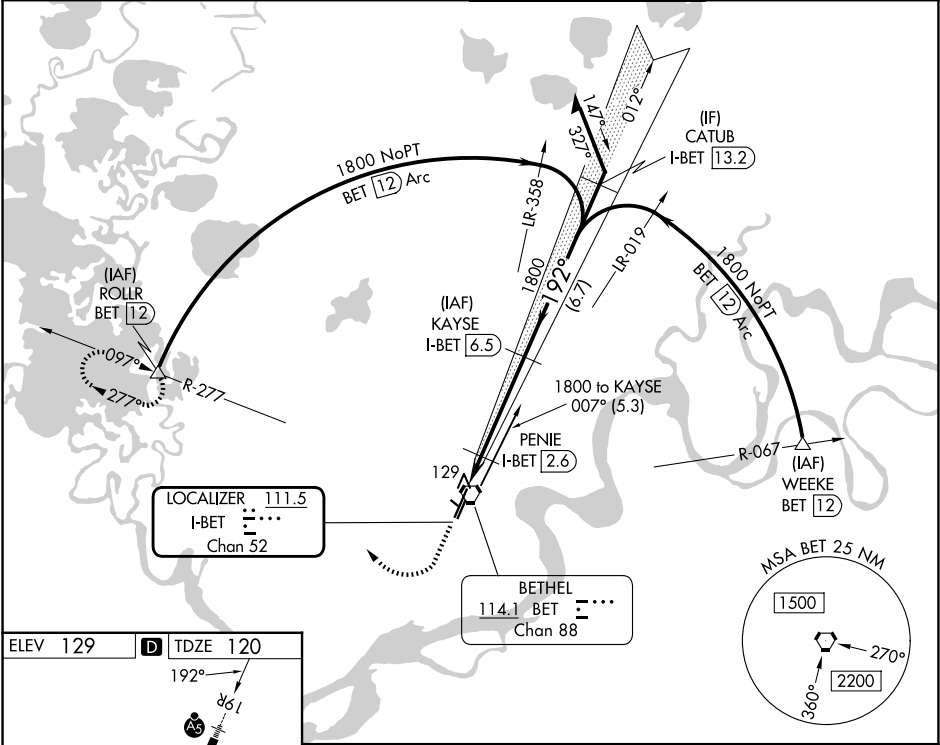
AL-5001 (FAA)

25219

LOC/DME I-BET	APP CRS	Rwy Ldg	6400
111.5	192°	TDZE	120
Chan 52		Apt Elev	129

ILS Z or LOC Z RWY 19R
BETHEL (BET)(PABE)

DME required.		MALSR	MISSED APPROACH: Climb to 700 then climbing right turn to 2000 on BET VORTAC R-277 to ROLLR/BET VORTAC 12 DME and hold.
⚠ Circling NA west of Rwy 1L-19R. ⚠ For inop ALS, increase S-LOC Cat C/D visibility to RVR 4500. # RVR 1800 authorized with the use of FD or AP or HUD to DA.		⚠	
ATIS 119.8	ANCHORAGE CENTER 125.2 372.0	BETHEL TOWER ★ 118.7 (CTAF) 0	GND CON 121.7



700	2000	ROLLR				
↑	BET R-277	△				
*LOC only.						

BETHEL, ALASKA
Amdt 7H 07AUG25

60°47'N-161°50'W

BETHEL (BET)(PABE)

ILS Z or LOC Z RWY 19R

AK, 07 AUG 2025 to 02 OCT 2025

AK, 07 AUG 2025 to 02 OCT 2025