

RNAV (GPS) RWY 5

| | |
|-----------|---------|
| APCH CRS | Rwy Idg |
| 050° | 5018 |
| TDZE | 41 |
| Arpt Elev | 41 |

[USA]

CAMP PEARY LNDG STRIP (KW94)

RNP APCH - GPS

Restricted airfield, PPR. Contact Camp Peary Ops prior to landing.
Williamsburg Jamestown (KJGG) primary altimeter setting.

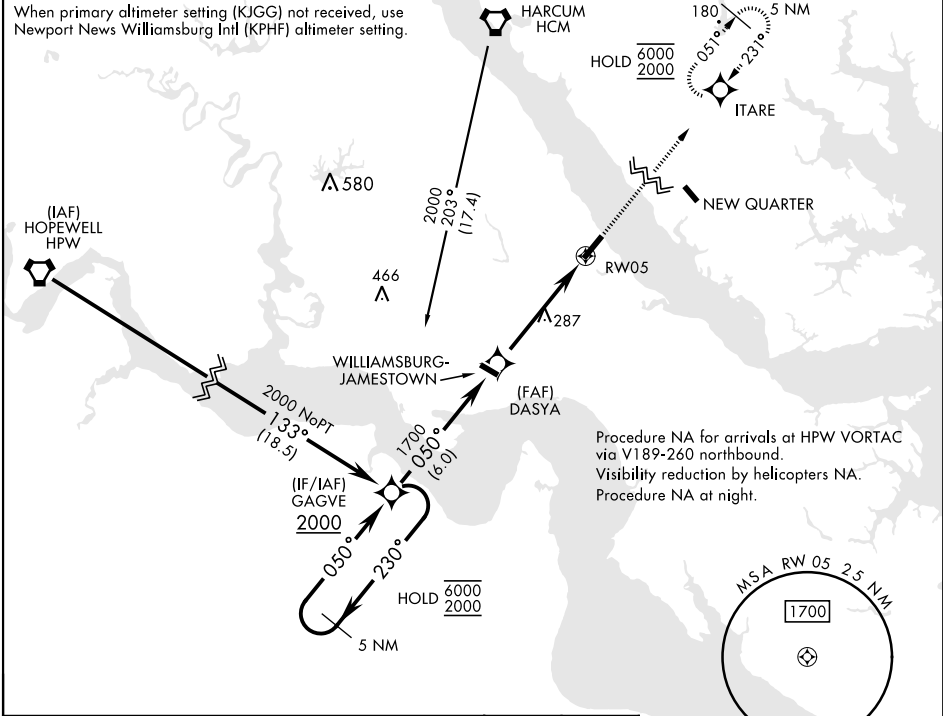
Available
Type
Unknown

MISSSED APPROACH: Climb to 2000 direct
ITARE and hold.

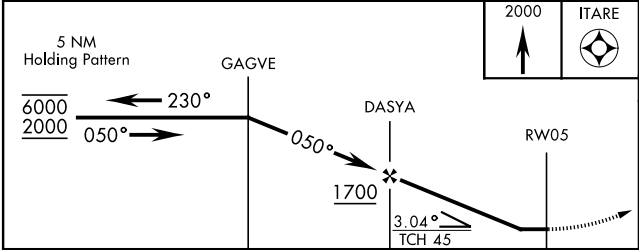
WILLIAMSBURG-JAMESTOWN AWOS-3
120.625

NORFOLK APP CON
125.7 335.625

When primary altimeter setting (KJGG) not received, use
Newport News Williamsburg Intl (KPHF) altimeter setting.



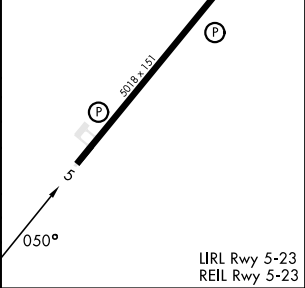
Procedure NA for arrivals at HPW VORTAC
via V189-260 northbound.
Visibility reduction by helicopters NA.
Procedure NA at night.



| CATEGORY | A | B | C | D |
|--|----------------------|----------------------|------------------------|------------------------|
| LNAV MDA | 600-1 | 559 (600-1) | 600-1½ | 559 (600-1½) |
| CIRCLING | 600-1 559 (600-1) | 620-1 579 (600-1) | 620-1½ 579 (600-1½) | 760-2¼ 719 (800-2¼) |
| NEWPORT NEWS / WILLIAMSBURG INTL ALTIMETER SETTING | | | | |
| LNAV MDA | 640-1 | 599 (600-1) | 640-1¾ | 599 (600-1¾) |
| CIRCLING | 640-1 | 599 (600-1) | 640-1¾ 599 (600-1¾) | 780-2¼ 739 (800-2¼) |

ELEV 41 TDZE 41

Rwy 05-23 Lead-In SFL.



RNAV (GPS) RWY 5