

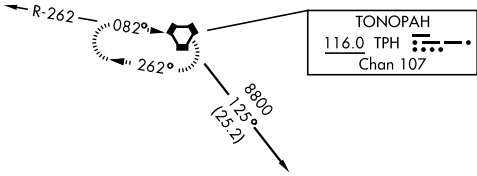
VOR/DME Z RWY 32

VORTAC TQQ 113.0 Chan 77	APCH CRS 314°	Rwy Idg THRE 5550 Arpt Elev 5550
--	-------------------------	--

AL-3188 [USAF]

TONOPAH TEST RANGE (KTNX)

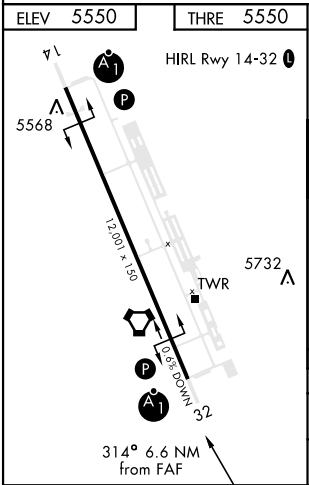
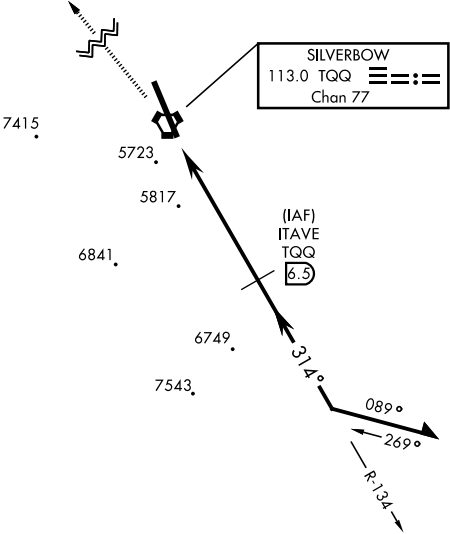
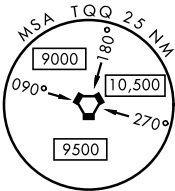
V *Circling not authorized W of Rwy 14-32.		ALSF-1 	MISSED APPROACH: Climb to 11,000 direct to TPH VORTAC and hold. Continue climb in holding to 11,000.
AWOS 113.0	NELLIS CONTROL 119.35 254.4	SILVERBOW TOWER★ 124.75 257.95 0	GND CON 127.25 335.5





9386 ●

CAUTION: High terrain 3 NM W of Rwy.
Unlit terrain 5561' MSL, 200' prior to
threshold, 385' left of course.

When VGSI inop, procedure NA at night.
USAF ONLY: When VGSI inop, straight-in
Rwy 32 authorized at night with MAJCOM
A3 approval.



EMERG SAFE ALT 100 NM 16,600 FROM TQQ					
11,000 ↑		TPH 		ITAVE <u>6.5</u>	
				Remain within 10 NM	
VORTAC		<u>2.2</u> ↓		134° ↘	
ITOGT <u>1</u>				314° ↖	
				<u>8800</u>	
				<u>7400</u>	
				↙ 2.84° TCH 39	
0.5		5.5 NM			
CATEGORY	A	B	C	D	E
S-32	6080/24	530 (600- ½)	6080/55 530 (600-1)	NOT AUTHORIZED	
 CIRCLING*	6080-1	530 (600-1)	6080-1½ 530 (600-1½)	NOT AUTHORIZED	

VOR/DME Z RWY 32

SW-4, 07 AUG 2025 to 04 SEP 2025

SW-4, 07 AUG 2025 to 04 SEP 2025