

VOR/DME Z RWY 14

VORTAC TQQ  
113.0  
Chan 77

APCH CRS  
145°

Rwy Idg  
THRE 5473  
Arpt Elev 5550

AL-3188 [USAF]

TONOPAH TEST RANGE (KTNX)

V

\* Circling not authorized W of Rwy 14-32.

ALSF-1

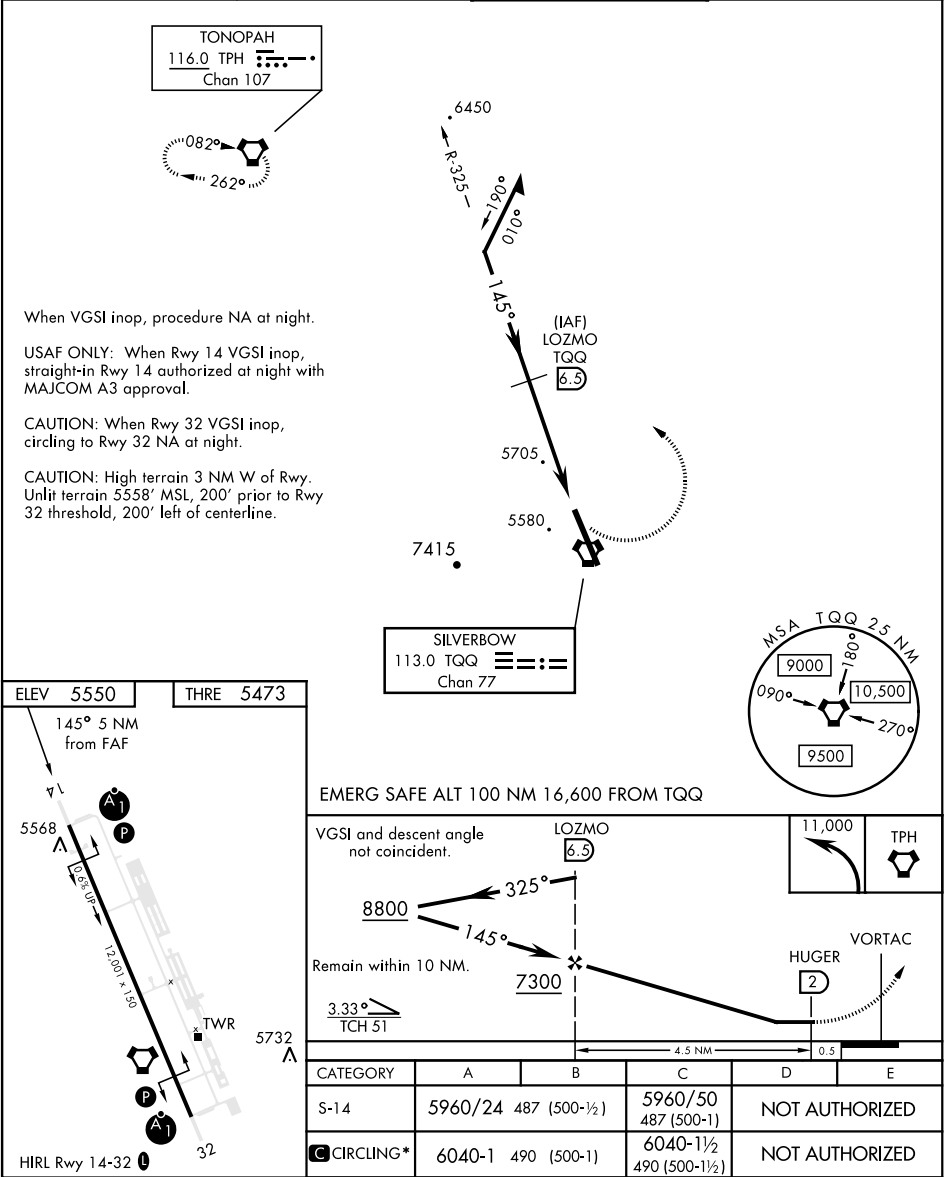
MISSED APPROACH: Turn left, climb to 11,000 direct to TPH VORTAC and hold. Continue climb in holding to 11,000.

AWOS  
113.0

NELLIS CONTROL  
119.35 254.4

SILVERBOW TOWER\*  
124.75 257.95 0

GND CON  
127.25 335.5



VOR/DME Z RWY 14

SW-4, 07 AUG 2025 to 04 SEP 2025

SW-4, 07 AUG 2025 to 04 SEP 2025