

## VOR/DME or TACAN RWY 32

VORTAC TQQ <b>113.0</b> Chan <b>77</b>	APCH CRS <b>314°</b>	Rwy Idg <b>12,001</b> THRE <b>5550</b> Arpt Elev <b>5550</b>
--	-------------------------	--

AL-3188 [USAF]

TONOPAH TEST RANGE (KTNX)

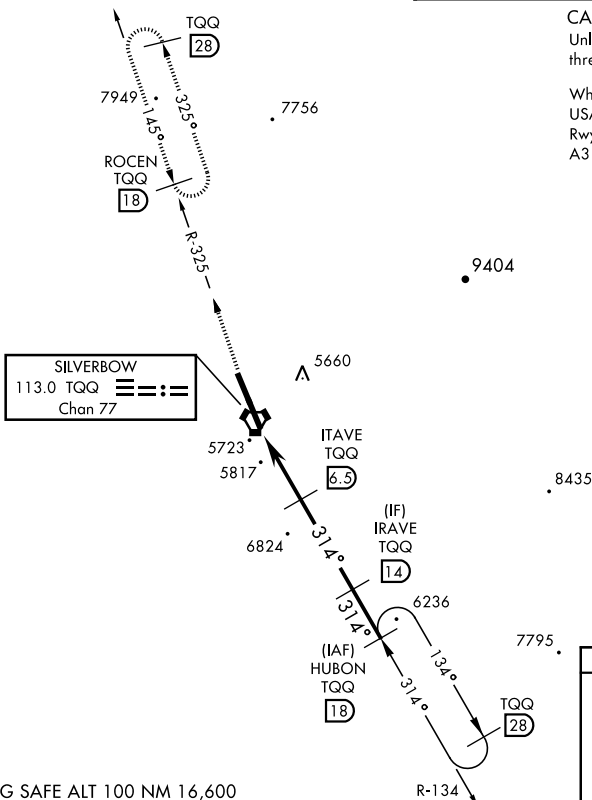
▼ \* When ALS inop, increase CAT CDE vis to 1½ miles.  
\*\* Circling not authorized W of Rwy 14-32

ALSF-1



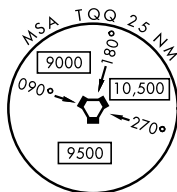
MISSED APPROACH: Climb to 11,000  
via TQQ VORTAC R-325 to ROCEN and  
hold, continue climb in hold to 11,000.

AWOS <b>113.0</b>	NELLIS CONTROL <b>119.35 254.4</b>	SILVERBOW TOWER★ <b>124.75 257.95</b>	GND CON <b>127.25 335.5</b>
----------------------	---------------------------------------	--	--------------------------------



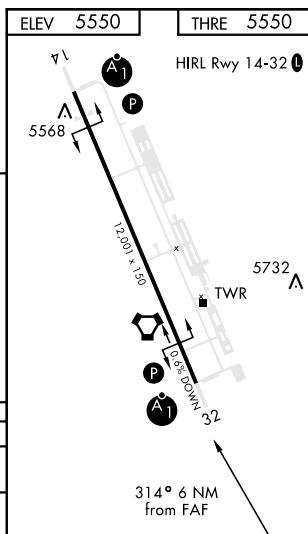
CAUTION: High terrain 3 NM W of Rwy.  
Unlit terrain 5561' MSL, 200' prior to  
threshold, 385' left of course.

When VGSi inop, procedure NA at night.  
USAF ONLY: When VGSi inop, straight-in  
Rwy 32 authorized at night with MAJCOM  
A3 approval.



EMERG SAFE ALT 100 NM 16,600

11,000 ↑ TQQ R-325	ROCEN TQQ 18	ITAVE 6.5	IRAVE 14	HUBON 18	10,400
VORTAC	ITOGE 1	7400	8700		
0.5	5.5 NM				
CATEGORY	A	B	C	D	E
S-32 *	6080-1	530	(600-1)		
CIRCLING**	6080-1	530 (600-1)	6080-1½ 530 (600-1½)	6100-2	550 (600-2)



## VOR/DME or TACAN RWY 32