

VOR/DME or TACAN RWY 14

VORTAC TQQ 113.0 Chan 77	APCH CRS 145°	Rwy Idg 12,001 THRE 5473 Arpt Elev 5550
--	-------------------------	--

AL-3188 [USAF]

TONOPAH TEST RANGE (KTNX)

T * When ALS inop, increase CAT AB vis to 1 mile,
CAT CDE vis to 1 3/8 miles.
** Circling not authorized W of Rwy 32.



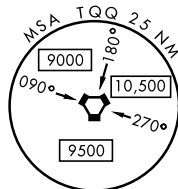
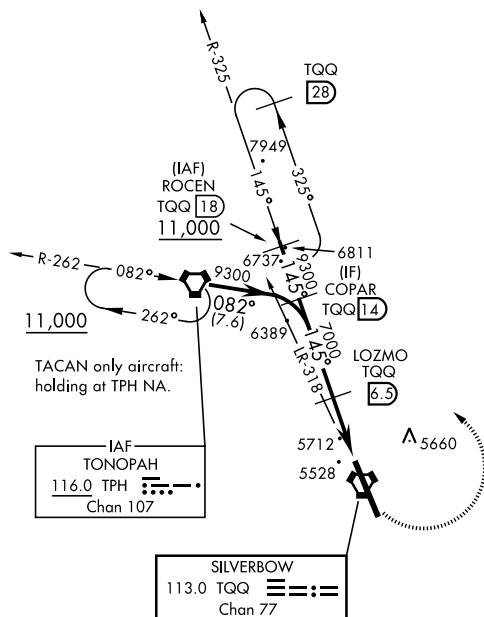
MISSED APPROACH: Turn left climbing to 11,000 via TQQ R-325 to ROCEN and hold, continue climb-in-hold to 11,000.

AWOS 113.0	NELLIS CONTROL 119.35 254.4	SILVERBOW TOWER★ 124.75 257.95 0	GND CON 127.25 335.5
---------------	--------------------------------	-------------------------------------	-------------------------

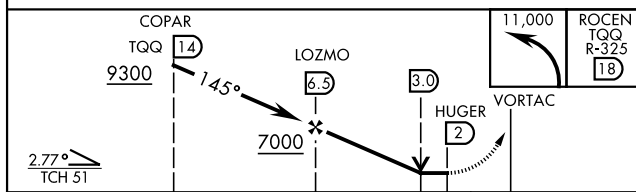
CAUTION: High terrain 3 NM W of Rwy.
Unlit terrain 5558' MSL, 200' prior to Rwy
32 threshold, 200' left of centerline.

When VGSI inop, procedure NA at night.
 USAF ONLY: When Rwy 14 VGSI inop,
 straight-in Rwy 14 authorized at night with
 MAJCOM A3 approval.

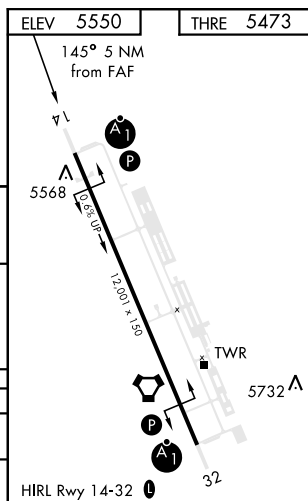
CAUTION: When Rwy 32 VGSI inop,
circling to Rwy 32 NA at night.



EMERG SAFE ALT 100 NM 16.600



CATEGORY		A	B	C	D	E
S-14 *		5980- $\frac{1}{2}$ 507 (500- $\frac{1}{2}$)	5980-1 507 (500-1)			
CIRCLING**		6040-1 490 (500-1)	6040-1 $\frac{1}{2}$ 490 (500-1 $\frac{1}{2}$)	6100-2 550 (600-2)		



TONOPAH, NEVADA

37°47'N - 116°47'W

TONOPAH TEST RANGE (KTNX)

VOR/DME or TACAN RWY 14

Amdt 3 09JAN14

SW-4, 07 AUG 2025 to 04 SEP 2025