

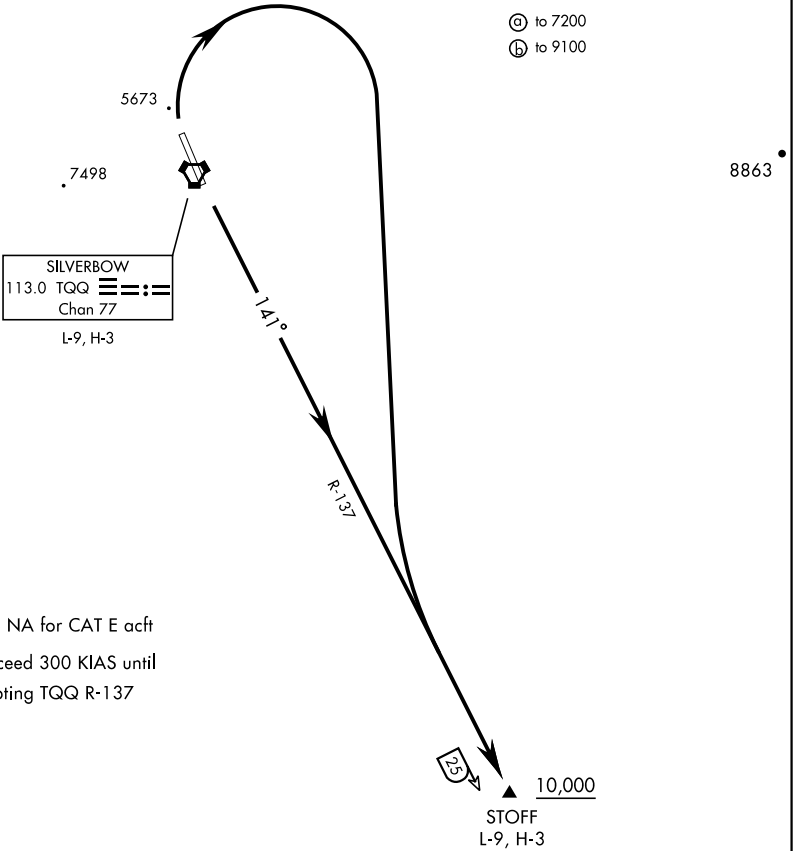


GND CON
127.25 335.5
SILVERBOW TOWER ★
124.75 257.95
NELLIS CONTROL
119.35 254.4

Rwy	Knots	60	120	180	240	300	360
14 Ⓢ	V/V(fpm)	205	410	615	820	1025	1230
32 Ⓟ	V/V(fpm)	260	520	780	1040	1300	1560

MINIMUM CLMB RATE

- Ⓢ to 7200
- Ⓟ to 9100



Procedure NA for CAT E acft
Do not exceed 300 KIAS until
intercepting TQQ R-137



DEPARTURE ROUTE DESCRIPTION

- TAKE-OFF RWY 14: Climb heading 141° to intercept TQQ VORTAC R-137 to STOFF, cross STOFF at or above 10,000.
- TAKE-OFF RWY 32: Climbing right turn to intercept TQQ VORTAC R-137 to STOFF, cross STOFF at or above 10,000.



SW-4, 07 AUG 2025 to 04 SEP 2025

SW-4, 07 AUG 2025 to 04 SEP 2025