

22083
SILVER ONE DEPARTURE (SILVR1 • SILVR)

TONOPAH TEST RANGE (KTNX)
TONOPAH, NEVADA

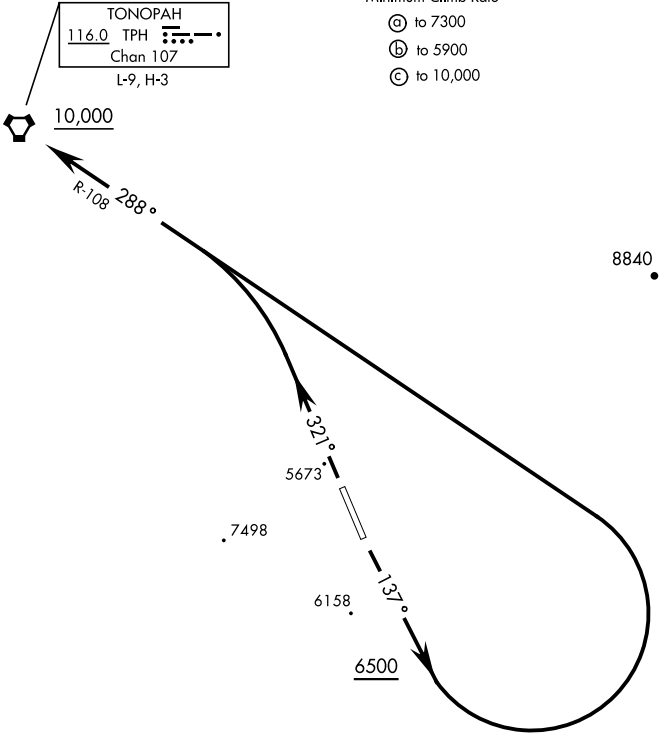
AL-3188 [USAF]

GND CON
127.25 335.5
SILVERBOW TOWER ★
124.75 257.95
NELLIS CONTROL
119.35 254.4

Rwy	Knots	60	120	180	240	300	360
14 (A)	V/V(fpm)	220	440	660	880	1100	1320
32 (B)	V/V(fpm)	260	520	780	1040	1300	1560
32 (C)	V/V(fpm)	261	522	783	1044	1305	1566

Minimum Climb Rate

- (A) to 7300
- (B) to 5900
- (C) to 10,000



DEPARTURE ROUTE DESCRIPTION

TAKEOFF RWY 14: Climb heading 137°, when leaving 6500 turn left direct TPH VORTAC. Cross TPH at or above 10,000.

TAKEOFF RWY 32: Climb heading 321° to intercept TPH VORTAC R-108 direct TPH. Cross TPH at or above 10,000.