

RNAV (GPS) RWY 32

APCH CRS 321°	Rwy Idg 12,001 TDZE 5550 Arpt Elev 5550
-------------------------	--

AL-3188 [USAF]

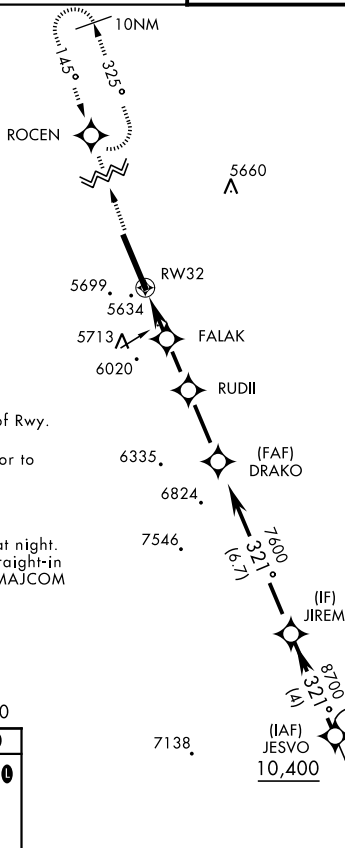
TONOPAH TEST RANGE (KTNX)

<p>▼ * When ALS inop, increase CAT CD vis to 1½ miles. ** Circling not authorized W of Rwy 14-32.</p>	<p>ALSF-1</p> 	<p>MISSED APPROACH: Climb to 11,000 direct ROCEN and hold, continue climb-in-hold to 11,000.</p>
--	---	--

AWOS 113.0	NELLIS CONTROL 119.35 254.4	SILVERBOW TOWER ★ 124.75 257.95 0	GND CON 127.25 335.5
---------------	--------------------------------	--------------------------------------	-------------------------

DME/DME RNP-0.3 NA

9200



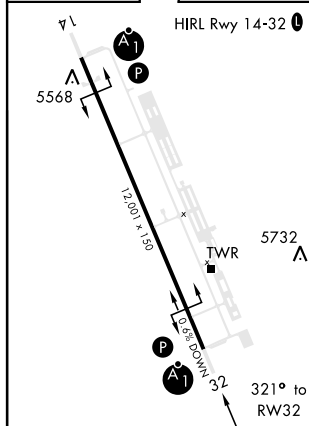
CAUTION: High terrain 3 NM W of Rwy.

Unlit terrain 5561' MSL, 200' prior to threshold, 385' left of course.

When VGSI inop, procedure NA at night.
USAF ONLY: When VGSI inop, straight-in
Rwy 32 authorized at night with MAJCOM
A3 approval.

EMERG SAFE ALT 100 NM 16,600

ELEV	5550		TDZE	5550
------	------	--	------	------



<p>11,000 ROCN</p> <p>1.3 NM to RW32</p> <p>RW32</p> <p>FALAK 6160</p> <p>RUDII 6700</p> <p>DRAKO 7600</p> <p>JIREM 8700</p> <p>321°</p> <p>2.83° TCH 39 (from FALAK)</p> <p>1.9 NM 2.1 NM 2.8 NM</p>					
CATEGORY	A		B	C	D
LNAV MDA *	5980/24 430 (500-½)		5980/40 430 (500-¾)		
C CIRCLING **	6040-1 490 (500-1)		6040-1½ 490 (500-1½)	6100-2 550 (600-2)	

TONOPAH, NEVADA

37°47'N-116°47'W

TONOPAH TEST RANGE (KTNX)

RNAV (GPS) RWY 32

Amdt 3 29MAR18

SW-4, 07 AUG 2025 to 04 SEP 2025