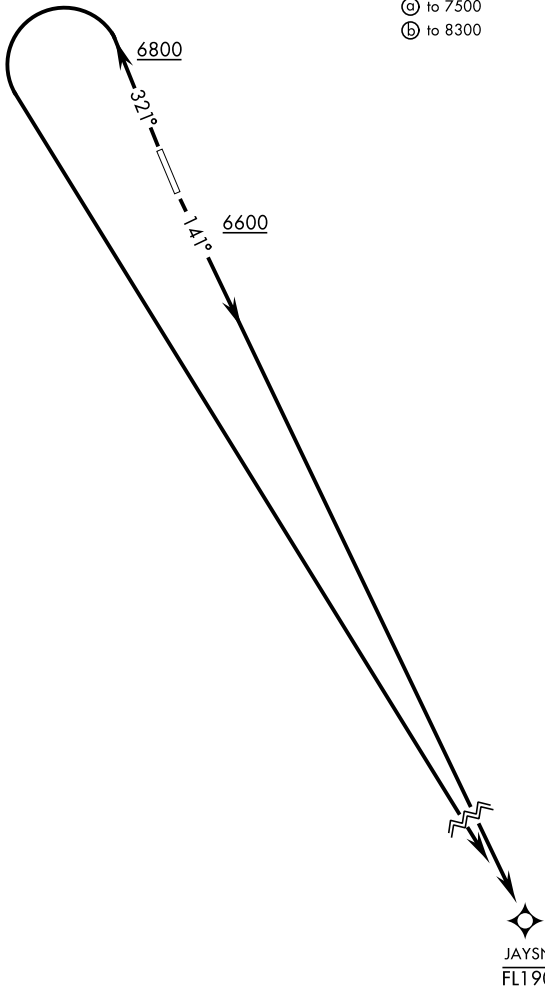


AWOS 113.0	[USAF] AL-3188	Rwy	Knots	60	120	180	240	300	360
GND CON		14	ⓐ V/V(fpm)	246	492	738	984	1230	1476
127.25 335.5		32	ⓑ V/V(fpm)	336	672	1008	1344	1680	2016
SILVERBOW TOWER ★									
124.75 257.95									
NELLIS CONTROL									
119.35 254.4									

Minimum Climb Rate
ⓐ to 7500
ⓑ to 8300



RNAV1
GPS REQUIRED

▼

DEPARTURE ROUTE DESCRIPTION

TAKEOFF RWY 14: Climb on heading 141° to 6600, then direct to cross JAYSN at or below FL190 or as assigned by ATC.

TAKEOFF RWY 32: Climb on heading 321° to 6800, then left turn direct JAYSN or as assigned by ATC.

SW-4, 07 AUG 2025 to 04 SEP 2025

SW-4, 07 AUG 2025 to 04 SEP 2025