

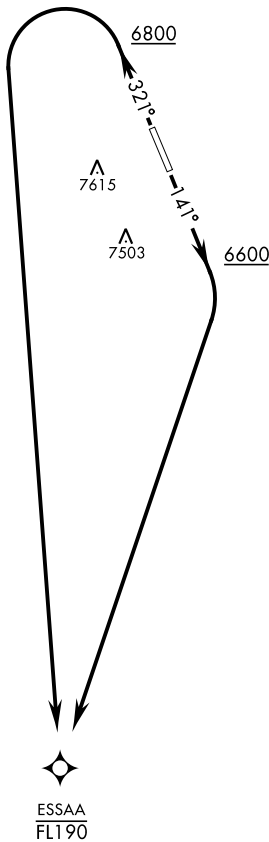
AWOS 113.0	[USAF] AL-3188	Rwy	Knots	60	120	180	240	300	360
GND CON		14	ⓐ	V/V(fpm)	387	774	1161	1548	1935
127.25 335.5		32	ⓑ	V/V(fpm)	336	672	1008	1344	1680
SILVERBOW TOWER ★									
124.75 257.95									

119.35 254.4

Minimum Climb Rate

ⓐ to 8200

ⓑ to 8300



RNAV1

GPS REQUIRED

▼

DEPARTURE ROUTE DESCRIPTION

TAKEOFF RWY 14: Climb on heading 141° to 6600, then right turn direct to cross ESSAA at or below FL190 or as assigned by ATC.

TAKEOFF RWY 32: Climb on heading 321° to 6800, then left turn direct ESSAA maintain at or below FL190 or as assigned by ATC.

SW-4, 07 AUG 2025 to 04 SEP 2025

SW-4, 07 AUG 2025 to 04 SEP 2025