

COPTER RNAV (GPS) RWY 32

APCH CRS	Rwy Idg	570
301°	TDZE	1017
	Arpt Elev	1017

[USA]

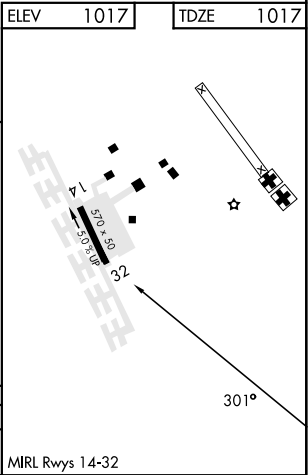
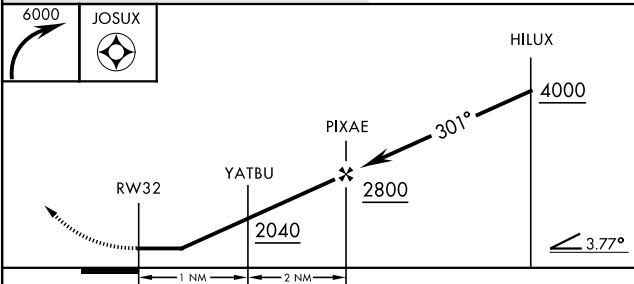
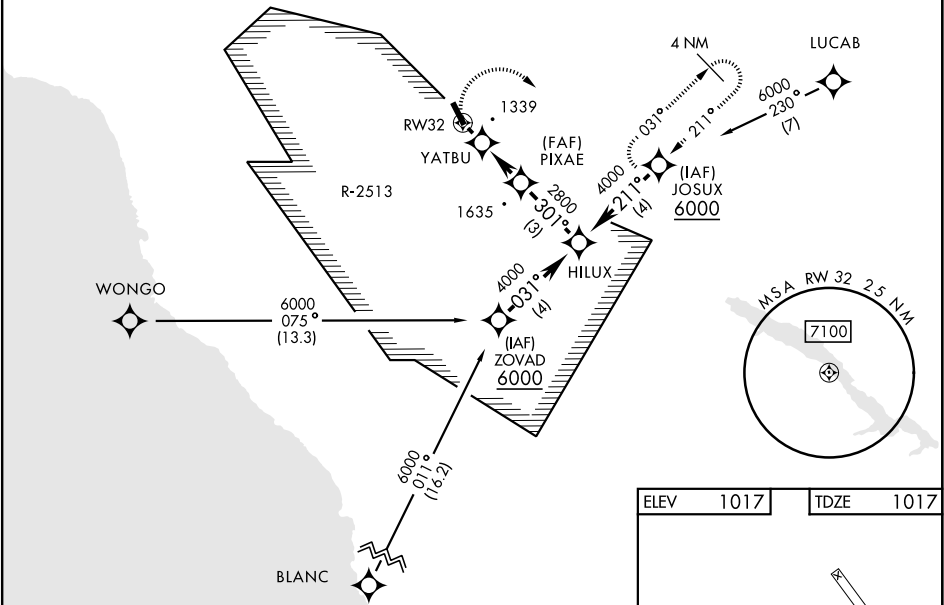
TUSI AHP (KHGT)

<p>▼ Procedure not authorized when Fort Hunter-Liggett altimeter setting not available.</p> <p>▲ NA Limit final and missed approach to 90 KIAS.</p>	<p>MISSED APPROACH: Climbing right turn to 6000 direct JOSUX and hold.</p>
---	--

<p>OAKLAND CENTER</p> <p>128.7 307.0</p>	<p>RANGE CON/OPS</p> <p>41.05 126.2 229.5</p>
--	---

NOT FOR CIVIL USE

DME/DME RNP-0.3 NA



CATEGORY	COPTER		
LNNAV MDA	1660-½	643	(700-½)

COPTER RNAV (GPS) RWY 32

SW-3, 07 AUG 2025 to 04 SEP 2025

SW-3, 07 AUG 2025 to 04 SEP 2025