

NORTH, SOUTH CAROLINA

RNAV (GPS) RWY 6

APCH CRS	Rwy Idg	9003
061°	TDZE	281
	Arprt Elev	321

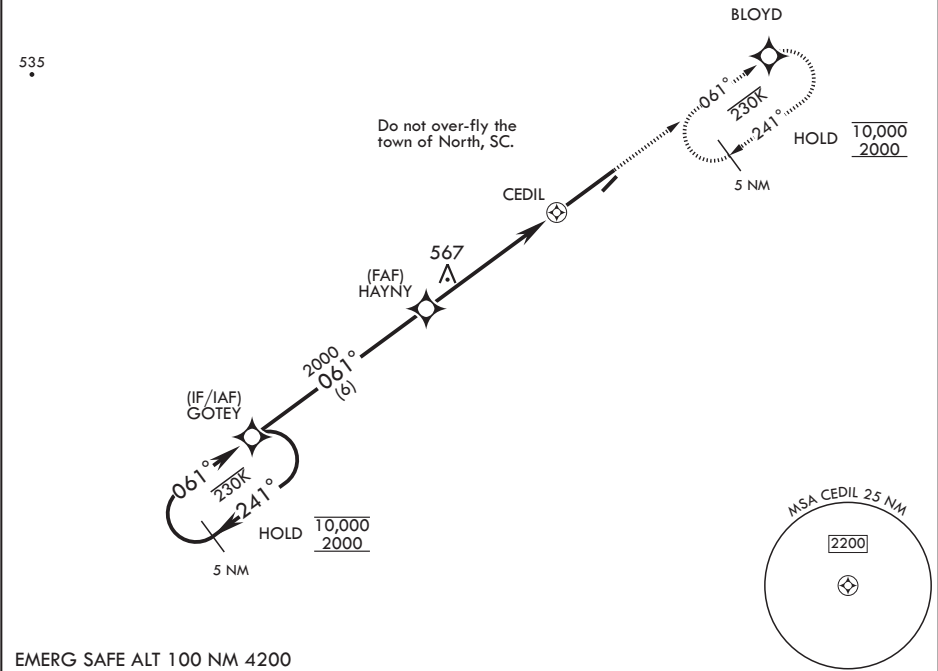
AL-3017 (USAF)

NORTH AF AUX (KXNO)

RNP APCH.	MISSED APPROACH: Climb to 2000 direct BLOYD and hold.
* Circling NA to Assault Strip.	

ASOS 118.525	COLUMBIA APP CON/DEP CON 124.15 338.2	LZ/DZ OPS FAC 120.475 235.775
-----------------	--	----------------------------------

CAUTION: Uncontrolled
airspace below 700 ft AGL.



5 NM Holding Pattern		2000	BLOYD	ELEV 321	TDZE 281
10,000 2000		2000	2000	2000	Rwy 6 Idg 9003' Rwy 24 Idg 8999'
3.16° ≥ TCH 50		1 NM to CEDIL	CEDIL	4.5 NM	0.5
CATEGORY	A	B	C	D	E
LNAV MDA	880-1	599 (600-1)	880-1½	599 (600-1½)	
CIRCLING*	940-1	619 (700-1)	940-1½ 619 (700-1½)	1400-3	1079 (1100-3)
NORTH, SOUTH CAROLINA		33°37'N - 81°05'W		NORTH AF AUX (KXNO)	
Amdt 3 29DEC22				RNAV (GPS) RWY 6	