

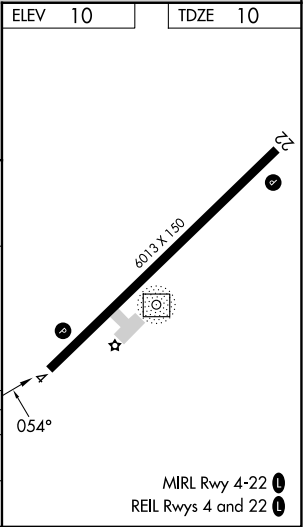
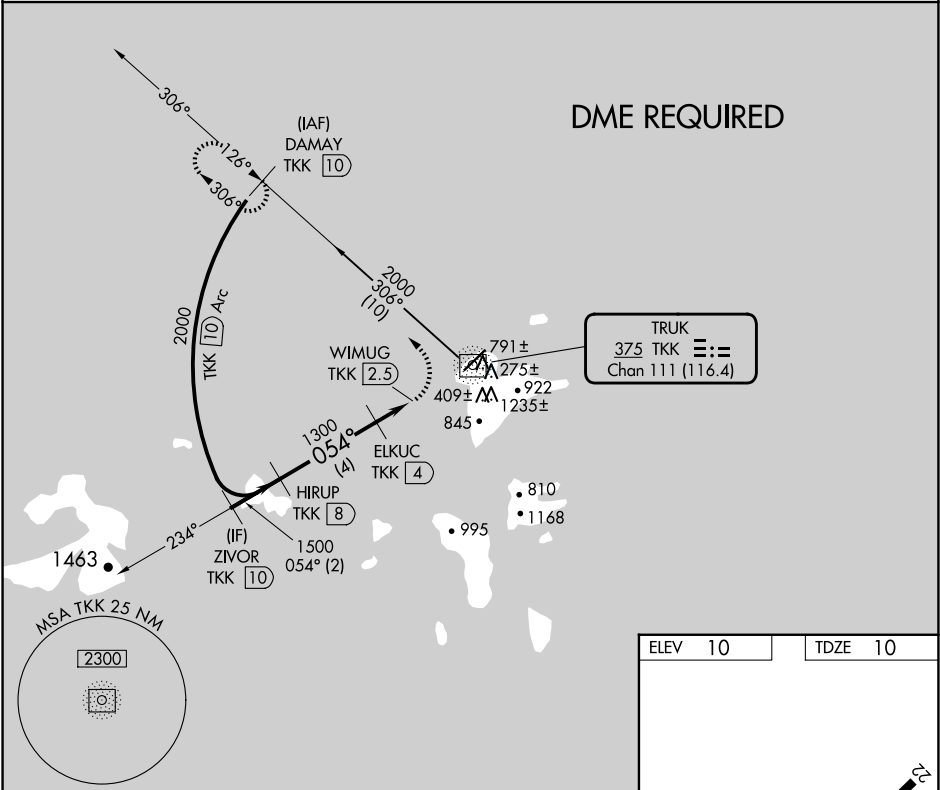
| | | | |
|------------------|---------|----------|------|
| NDB/DME TTK | APP CRS | Rwy Idg | 6013 |
| 375 | 054° | TDZE | 10 |
| Chan 111 (116.4) | | Apt Elev | 10 |

NDB RWY 4
CHUUK INTL (TKK) (PTKK)

- Obtain local altimeter setting on CTAF; when not received, procedure NA.
- Circling NA southeast of Rwy 4-22. DME required.
- No controlled airspace below 5500.

MISSED APPROACH: Climbing left turn to 2000 on TTK NDB/DME bearing 306° to DAMAY/TKK 10 DME and hold.

TRUK RADIO
123.6 (CTAF)



| | | | | | | |
|----------|-----------------|----------------|----------------|------------------|----------------|-----------------|
| | ZIVOR TKK 10 | HIRUP TKK 8 | ELKUC TKK 4 | WIMUG TKK 2.5 | TKK NDB/DME | DAMAY TKK 10 |
| | 2000 | 1500 | 1300 | 1300 | 1300 | 2000 |
| | 054° | 054° | 054° | 054° | 054° | 054° |
| | 2 NM | 4 NM | 1.5 NM | 2.2 NM | | |
| CATEGORY | A | B | C | D | | |
| S-4 | 720-2½ | 710 (800-2½) | | | | |
| CIRCLING | 720-2½ | 710 (800-2½) | | | | |