

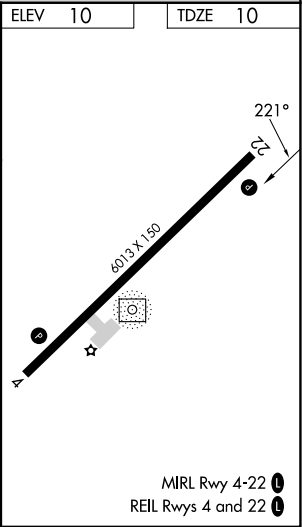
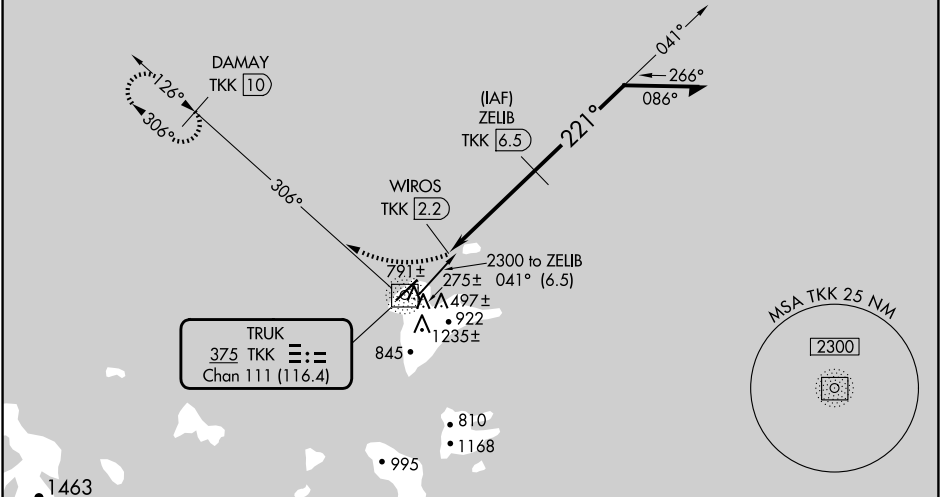
NDB/DME	TKK	Rwy Idg	6013
375	APP CRS	TDZE	10
Chan 111 (116.4)	221°	Apt Elev	10

NDB RWY 22  
CHUUK INTL (TKK) (PTKK)

- ⚠** Obtain local altimeter setting on CTAF; when not received, procedure NA.  
**⚠** Circling NA southeast of Rwy 4-22. DME Required.  
No controlled airspace below 5500.
- MISSED APPROACH:** Climbing right turn to 2000 on BRG-306 from TKK NDB/DME to DAMAY/TKK 10 DME and hold.

TRUK RADIO  
123.6 0 (CTAF)

DME REQUIRED



<div>2000 TKK 306°</div> <div>DAMAY TKK 10</div>		<div>ZELIB TKK 6.5</div> <div>Remain within 10 NM</div>		
<div>TKK NDB/DME</div> <div>WIROS TKK 2.2</div>		<div>2300</div>		
<div>1.5 NM</div> <div>4.3 NM</div>		<div>041°</div> <div>221°</div> <div>1900</div> <div>3.00° TCH 50</div>		
CATEGORY	A	B	C	D
S-22	800-1¾	790 (800-1¾)	800-2½	790 (800-2½)
CIRCLING	800-1¾	790 (800-1¾)	800-2½	790 (800-2½)