

COPTER RNAV (GPS) RWY 35

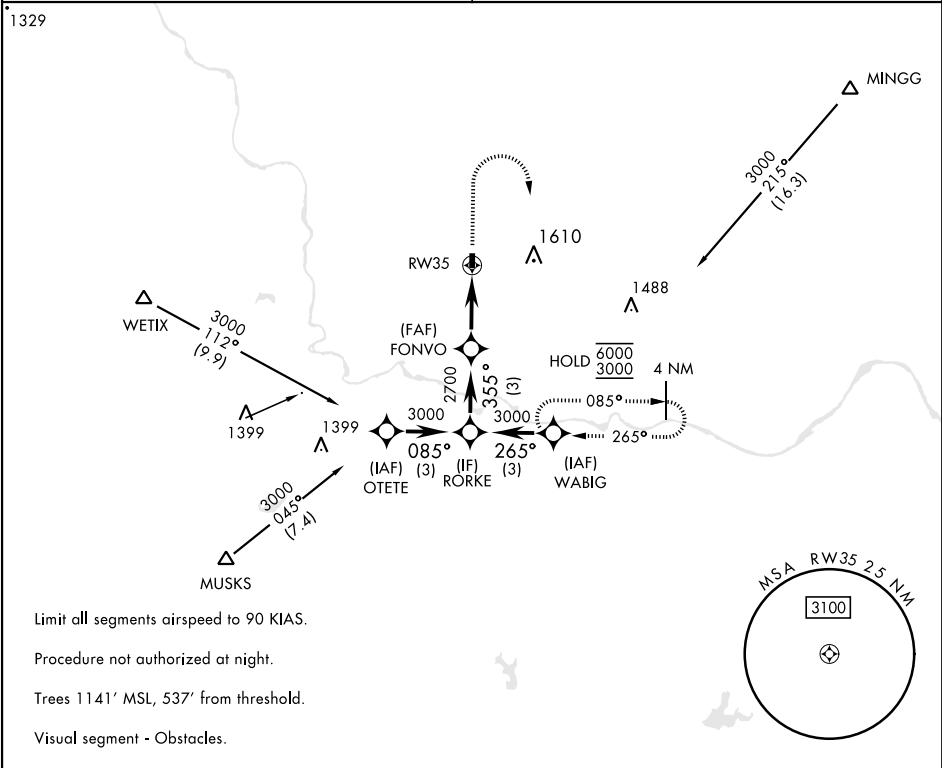
APCH CRS	Rwy Idg	2005
355°	TDZE	1091
	Arpt Elev	1091

[USA]

MULDROW AHP (KHMY)

RNP APCH - GPS	MISSED APPROACH: Climb to 1600, then climbing right turn to 3000 direct WABIG and hold.
Obtain local altimeter setting on CTAF; when not received, use University of Oklahoma Westheimer altimeter setting minimums.	

OKE CITY APP CON 124.2 336.4	MULDROW OPS (Advisory service only) 46.9 139.425 227.2 (CTAF)
---------------------------------	--



1600	3000	WABIG	ELEV 1091	TDZE 1091
CATEGORY	COPTER			
LNAV MDA	1580-1 489 (500-1)			
UNIVERSITY OF OKLAHOMA WESTHEIMER ALTIMETER SETTING MINIMUMS				
LNAV MDA	1640-1 549 (600-1)			
LIRL Rwy 17-35			35 355°	

COPTER RNAV (GPS) RWY 35