

COPTER RNAV (GPS) RWY 17

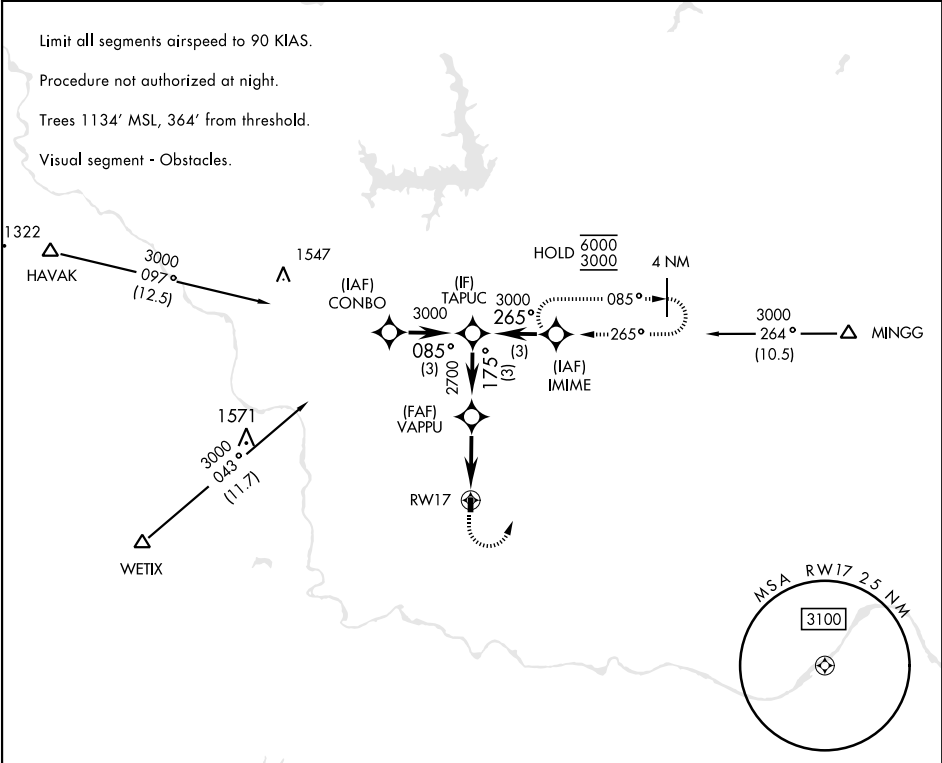
APCH CRS	Rwy Idg	2005
175°	TDZE	1091
	Arpt Elev	1091

[USA]

MULDROW AHP (KHMY)

RNP APCH - GPS	MISSED APPROACH: Climbing left turn to 3000 direct IMIME and hold.
▼ NA Obtain local altimeter setting on CTAF; when not received, use University of Oklahoma Westheimer altimeter setting minimums.	

OKE CITY APP CON 124.2 336.4	MULDROW OPS (Advisory service only) 46.9 139.425 227.2 (CTAF)
---------------------------------	--



		ELEV 1091	TDZE 1091
CATEGORY COPTER		↓ 175°	
LNAV MDA	1660-1 569 (600-1)		
UNIVERSITY OF OKLAHOMA WESTHEIMER ALTIMETER SETTING MINIMUMS			
LNAV MDA	1720-1 629 (700-1)		
URL Rwy 17-35		35	

COPTER RNAV (GPS) RWY 17

SC-1, 07 AUG 2025 to 04 SEP 2025

SC-1, 07 AUG 2025 to 04 SEP 2025