

RNAV (GPS) RWY 11

| | |
|-----------|---------|
| APCH CRS | Rwy Idg |
| 105° | 8000 |
| TDZE | 318 |
| Arpt Elev | 322 |

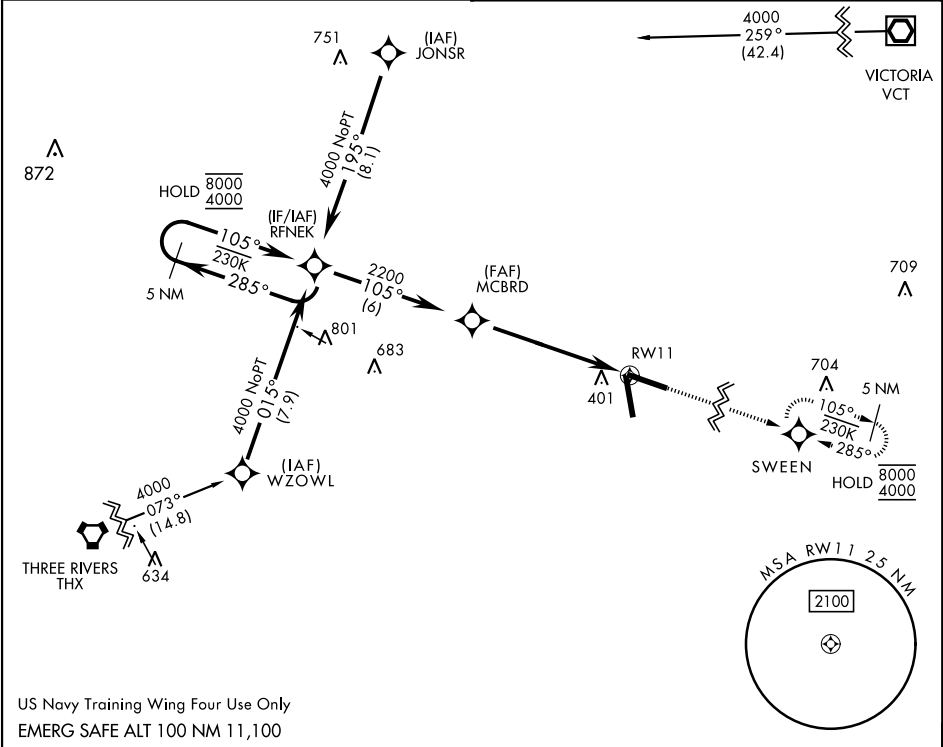
[USN]

GOLIAD NOLF (KNGT)

RNP APCH

MISSED APPROACH: Climb to 4000 direct SWEEN and hold, continue climb-in-hold to 4000.

| | |
|-----------------|-------------------------|
| ASOS 353.675 | CTAF 132.875 307.075 |
|-----------------|-------------------------|

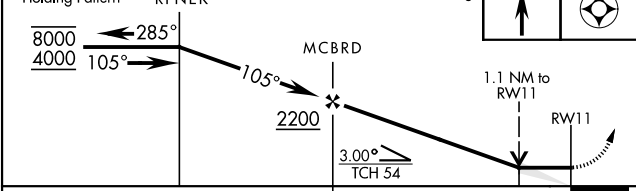


US Navy Training Wing Four Use Only
EMERG SAFE ALT 100 NM 11,100

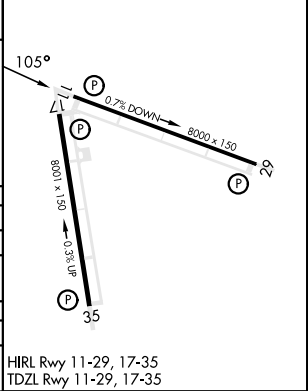
VDP NA with Beeville Muni altimeter setting.

4000 SWEEN

ELEV 322 TDZE 318



| CATEGORY | A | B | C | D |
|--|-------------------|-------------------|-------------------|-------------------|
| LNVA MDA | 720-1 402 (400-1) | 720-1 402 (400-1) | 720-1 402 (400-1) | 720-1 402 (400-1) |
| CIRCLING | 800-1 478 (500-1) | 820-1 498 (500-1) | 820-1 498 (500-1) | 880-2 558 (600-2) |
| BEEVILLE MUNI ALTIMETER SETTING MINIMA | | | | |
| LNVA MDA | 760-1 442 (500-1) | 760-1 442 (500-1) | 760-1 442 (500-1) | 760-1 442 (500-1) |
| CIRCLING | 800-1 478 (500-1) | 820-1 498 (500-1) | 820-1 498 (500-1) | 880-2 558 (600-2) |



RNAV (GPS) RWY 11

SC-3, 07 AUG 2025 to 04 SEP 2025

SC-3, 07 AUG 2025 to 04 SEP 2025