

APCH CRS	Rwy Idg	4499
039°	TDZE	14
	Arpt Elev	14

[USA]

DYESS AAF (PKRO)

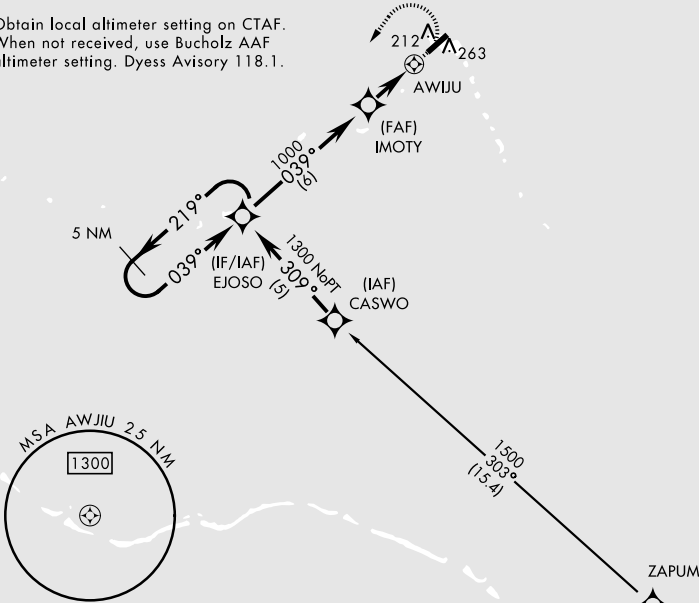
RNP APCH - GPS
▲ NA * Circling not authorized E of Rwy 04-22.

MISSED APPROACH: Climbing left turn to 1300 direct EJOSO and hold.

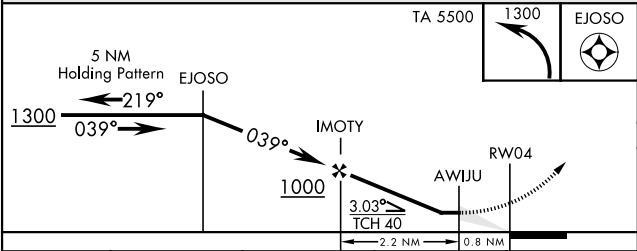
AWOS 119.0	BUCHOLZ TOWER ★ 126.2 360.2	ROI RADIO 118.8	CTAF 118.1
---------------	--------------------------------	--------------------	---------------

Procedure not authorized at night except by prior arrangement for runway lights.

Obtain local altimeter setting on CTAF. When not received, use Bucholz AAF altimeter setting. Dyess Advisory 118.1.



NOT FOR CIVIL USE



CATEGORY	A	B	C	D
RNAV MDA	420-1	406 (500-1)	420-1¼ 406 (500-1¼)	NOT AUTHORIZED
CIRCLING*	580-1	566 (600-1)	580-1½ 566 (600-1½)	NOT AUTHORIZED
BUCHOLZ AAF ALTIMETER SETTING MINIMUMS				
RNAV MDA	520-1	506 (600-1)	520-1½ 506 (600-1½)	NOT AUTHORIZED
CIRCLING*	680-1	666 (700-1)	680-1¾ 666 (700-1¾)	NOT AUTHORIZED

