

RNAV (GPS) RWY 22

APCH CRS	Rwy Idg	4499
219°	TDZE	14
	Arpt Elev	14

[USA]

DYESS AAF (PKRO)

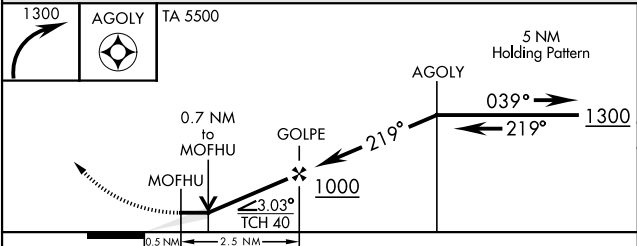
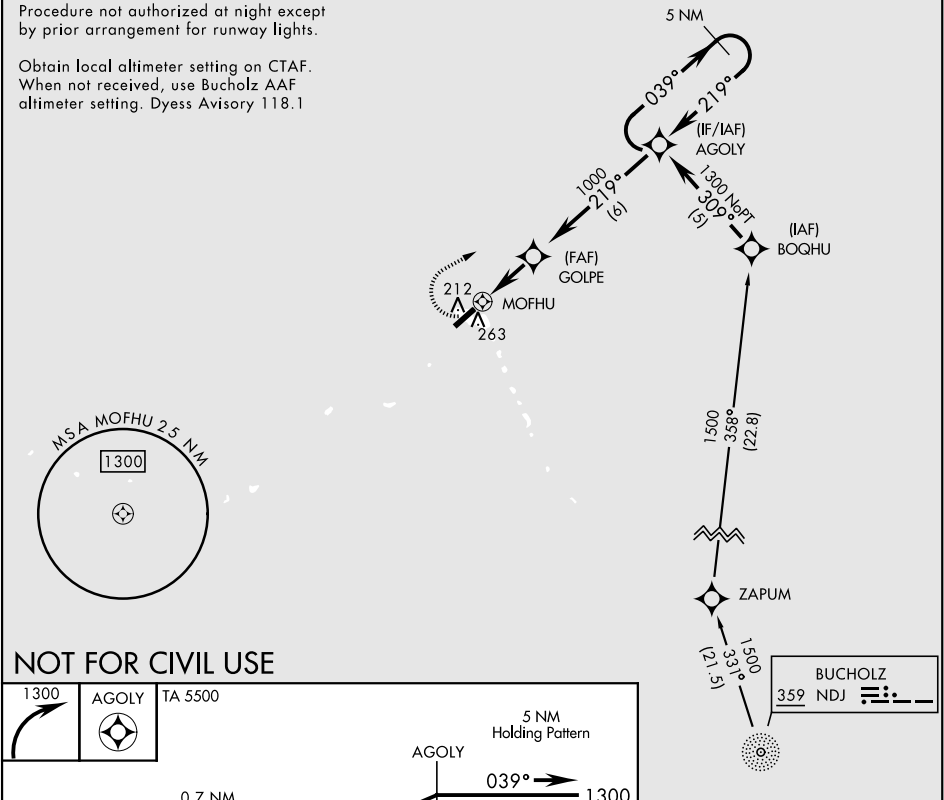
RNP APCH - GPS
NA * Circling not authorized E of Rwy 04-22.

MISSED APPROACH: Climbing right turn to 1300 direct AGOLY and hold.

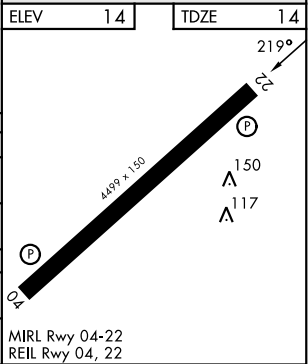
AWOS 119.0	BUCHOLZ TOWER ★ 126.2 360.2	ROI RDO 118.8	CTAF 118.1
---------------	--------------------------------	------------------	---------------

Procedure not authorized at night except by prior arrangement for runway lights.

Obtain local altimeter setting on CTAF. When not received, use Bucholz AAF altimeter setting. Dyess Advisory 118.1



CATEGORY	A	B	C	D
LNAV MDA	580-1 566 (600-1)		580-1½ 566 (600-1½)	NOT AUTHORIZED
CIRCLING*	580-1 566 (600-1)		580-1½ 566 (600-1½)	NOT AUTHORIZED
BUCHOLZ AAF ALTIMETER SETTING MINIMUMS				
LNAV MDA	680-1 666 (700-1)		680-1½ 666 (700-1½)	NOT AUTHORIZED
CIRCLING*	680-1 666 (700-1)		680-1½ 666 (870-1½)	NOT AUTHORIZED



RNAV (GPS) RWY 22

PAC, 07 AUG 2025 to 02 OCT 2025

PAC, 07 AUG 2025 to 02 OCT 2025