

RNAV (GPS) RWY 25

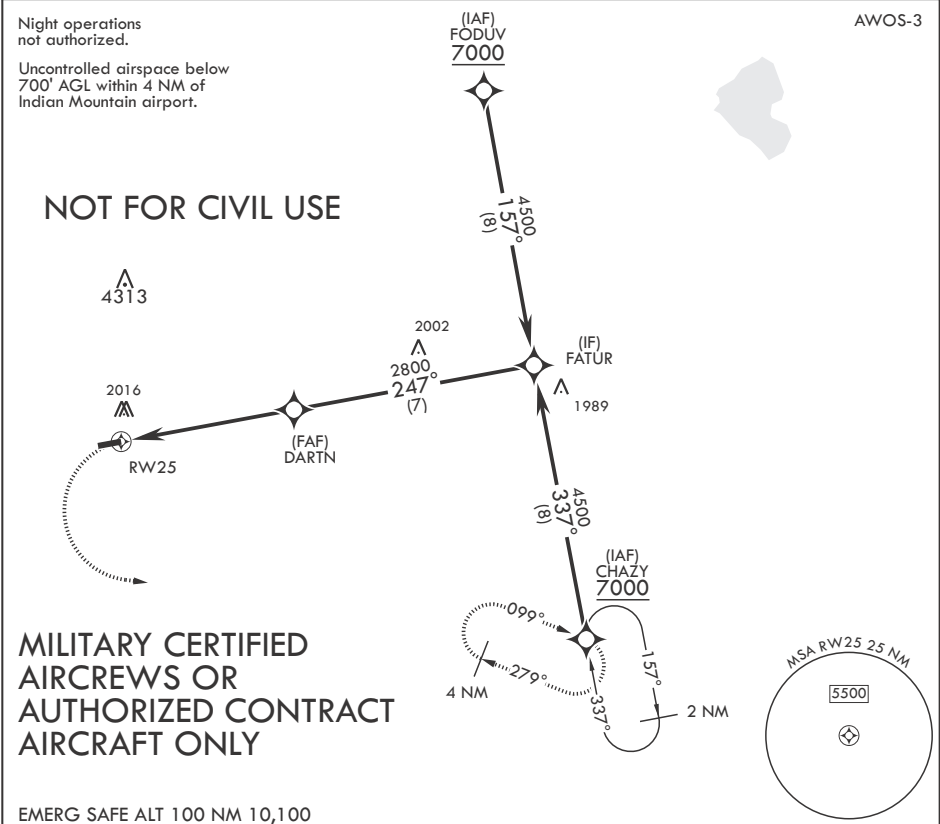
APCH CRS	Rwy Idg	4100
247°	TDZE	1161
	Arpt Elev	1261

- (USAF)

INDIAN MOUNTAIN LRRS (PAIM)

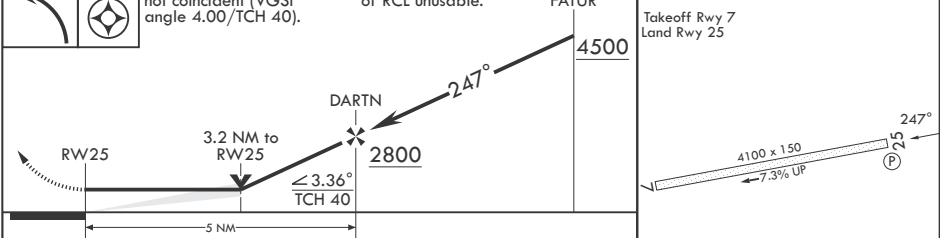
RNP APCH-GPS	MISSED APPROACH: Climbing left turn to 7000 direct CHAZY and hold. Continue climb in hold to 7000.
--------------	--

ANCHORAGE CENTER 124.6 352.0	CTAF 126.2	FAIRBANKS RADIO 122.6
---------------------------------	---------------	--------------------------



MILITARY CERTIFIED
AIRCREWS OR
AUTHORIZED CONTRACT
AIRCRAFT ONLY

EMERG SAFE ALT 100 NM 10,100	7000 CHAZY	VGSI and descent angles not coincident (VGSI angle 4.00/TCH 40).	PAPI beyond 8° right of RCL unusable.	FATUR	ELEV 1261	TDZE 1161
------------------------------	------------	--	---------------------------------------	-------	-----------	-----------



CATEGORY	A	B	C	D
LNAV MDA	2360-1¼ 1199 (1100-1¼)	2360-1½ 1199 (1100-1½)	NA	NA
CIRCLING	NOT AUTHORIZED			

UTOPIA CREEK, ALASKA	66°00'N - 153°42'W	INDIAN MOUNTAIN LRRS (PAIM)
----------------------	--------------------	-----------------------------

Orig 31OCT24

RNAV (GPS) RWY 25

AK, 07 AUG 2025 to 02 OCT 2025

AK, 07 AUG 2025 to 02 OCT 2025