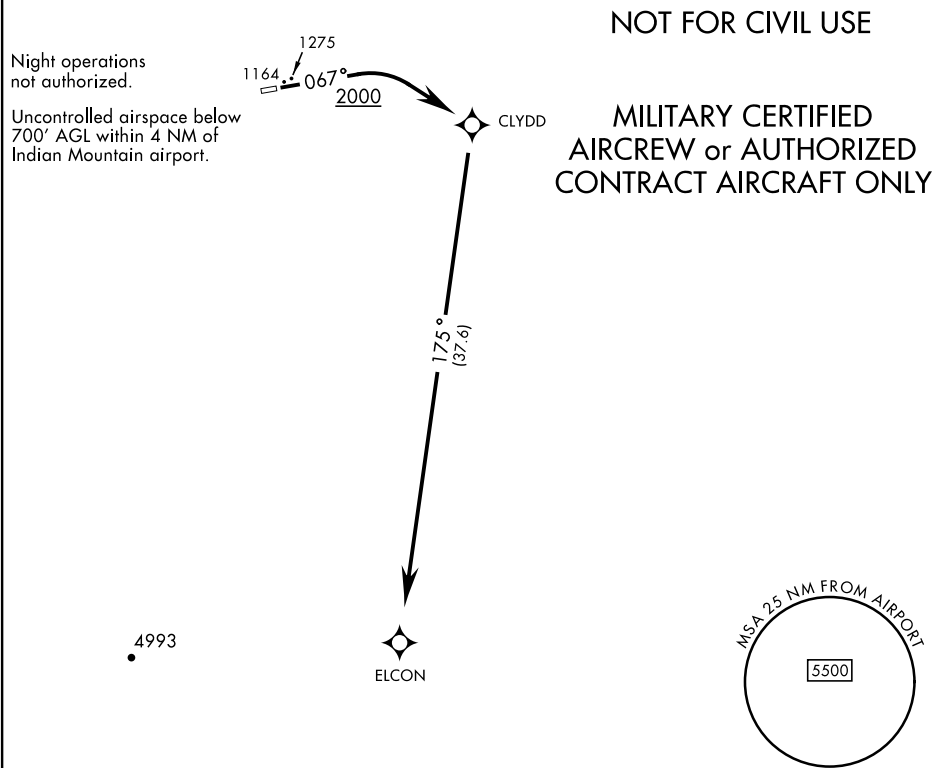


AWOS-3	RNAV1- GPS	[USAF]	Rwy	Knots	60	120	180	240	300	360
CTAF			7	V/V(fpm)	255	510	765	1020	1275	1530
126.2										
ANCHORAGE CNTR										
124.6 352.0										

Minimum Climb Rate to 1400
Controlling Obstacle 1161



T

DEPARTURE ROUTE DESCRIPTION

TAKEOFF RWY 07: Climb heading 067° to 2000, then climbing right turn direct CLYDD, then right turn on track 175° to ELCON, climb and maintain 8000.

TAKEOFF RWY 25: NA

AK, 07 AUG 2025 to 02 OCT 2025

AK, 07 AUG 2025 to 02 OCT 2025