

TIN CITY, ALASKA

RNAV (GPS) RWY 35

APCH CRS 349°	Rwy Idg 4702 TDZE 273 Arpt Elev 273
-------------------------	--

[USAF]

TIN CITY LRRS (PATC)

RNP APCH-GPS

T Night operations not authorized.
* Circling not authorized W of Rwy 17-35.

MISSED APPROACH: Climb to 1500 then climbing right turn to 4000 direct JAGMA and hold.

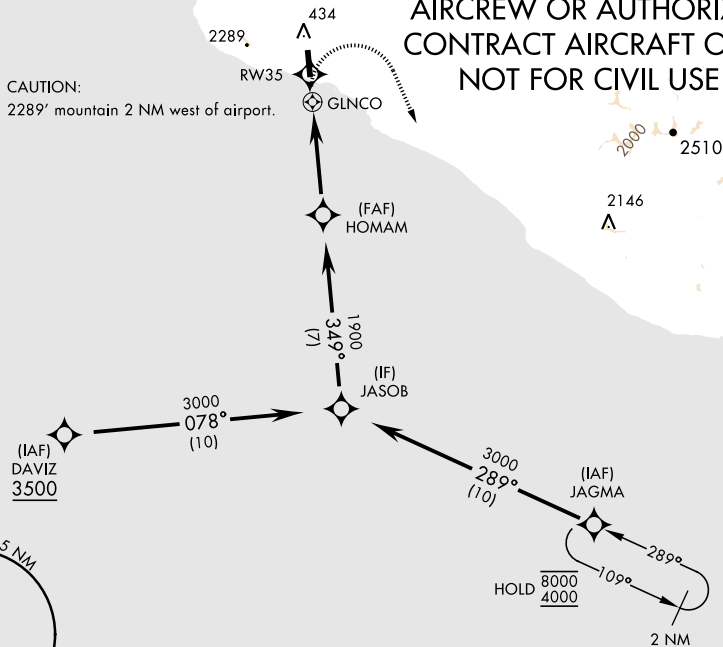
ANCHORAGE CENTER
133.3 290.4

TIN CITY RCO (NOME RADIO)
122.6

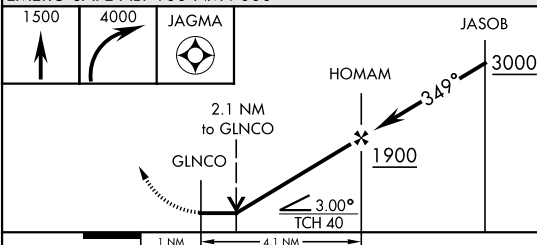
UNICOM
126.2 (CTAF)


Uncontrolled airspace below 700' AGL within 7 NM of Tin City airport.

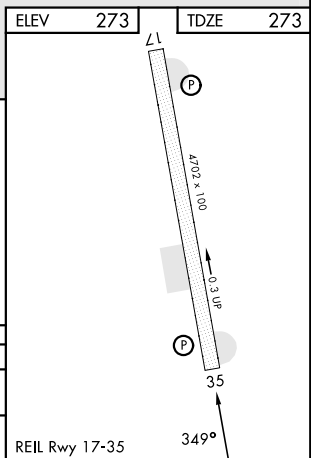
MILITARY CERTIFIED
AIRCREW OR AUTHORIZED
CONTRACT AIRCRAFT ONLY
NOT FOR CIVIL USE



EMERG SAFE ALT 100 NM 7000



CATEGORY	A	B	C	D
LNNAV MDA	1260-1¼ 987 (1000-1¼)	1260-1½ 987 (1000-1½)	1280-3 1007 (1100-3)	NA
 CIRCLING*	1260-1¼ 987 (1000-1¼)	1260-1½ 987 (1000-1½)	1280-3 1007 (1100-3)	NA



TIN CITY, ALASKA

65°34'N-167°55'W

TIN CITY LRRS (PATC)

Orig 26DEC24

RNAV (GPS) RWY 35

AK, 07 AUG 2025 to 02 OCT 2025

AK, 07 AUG 2025 to 02 OCT 2025