

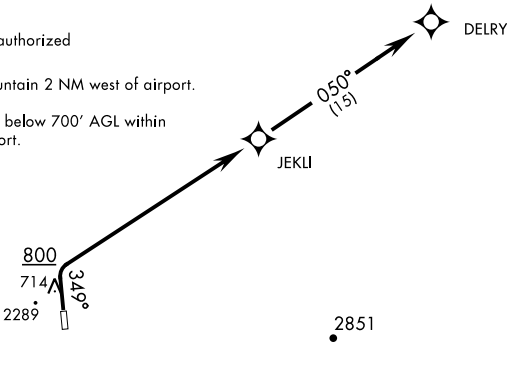
Minimum Climb Rate to 800

MILITARY CERTIFIED  
AIRCREW OR AUTHORIZED  
CONTRACT AIRCRAFT ONLY  
  
NOT FOR CIVIL USE

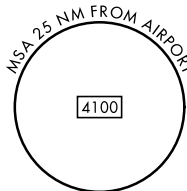
Night operations not authorized

CAUTION: 2289' mountain 2 NM west of airport.

Uncontrolled airspace below 700' AGL within  
7 NM of Tin City airport.



WARNING: High terrain within 2 NM of departure end of runway  
requiring prompt compliance with departure procedure instructions;  
do not delay start of initial turn.



DEPARTURE ROUTE DESCRIPTION

TAKEOFF RWY 17: NA

TAKEOFF RWY 35: Climb heading 349° to 800, then right turn direct JEKLI,  
then track 050° to DELRY. Maintain 7000 or ATC assigned altitude.