

RNAV (GPS) RWY 27

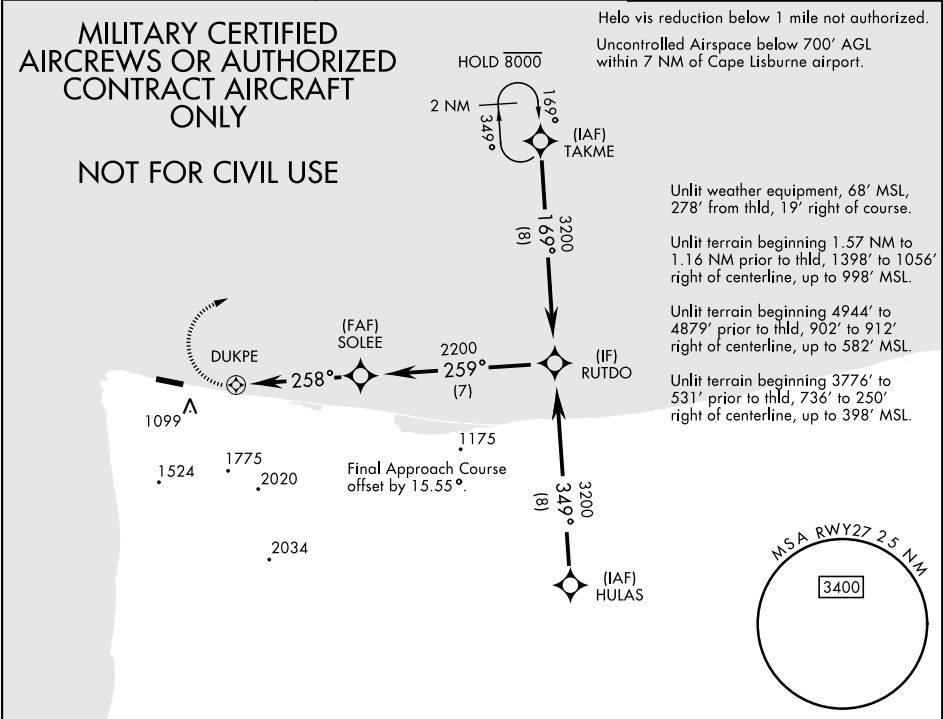
APCH CRS	Rwy Idg	4800
258°	THRE	14
	Arpt Elev	14

[USAF]

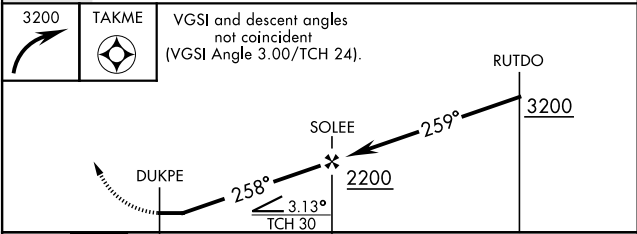
CAPE LISBURNE LRRS (PALU)

RNP APCH - GPS	MISSED APPROACH: (Do not exceed 220 KIAS until turn completion). Climbing right turn to 3200 direct TAKME and hold.
* Circling not authorized S of runway 9-27 Night operations not authorized.	

ANCHORAGE CENTER 119.65 363.25	KOTZEBUE RADIO ★ 122.3	CTAF 126.2
-----------------------------------	---------------------------	---------------



EMERG SAFE ALT 100 NM 6700



CATEGORY	A	B	C	D
LNAV MDA	1360-2½ 1346 (1400-2½)		1360-3 1346 (1400-3)	NOT AUTHORIZED
CIRCLING*	1360-2½ 1346 (1400-2½)		1360-3 1346 (1400-3)	NOT AUTHORIZED

ELEV	14	THRE	14
<p>4800 x 135</p> <p>258°</p>			
REIL Rwy 9 and 27			

RNAV (GPS) RWY 27

AK, 07 AUG 2025 to 02 OCT 2025

AK, 07 AUG 2025 to 02 OCT 2025