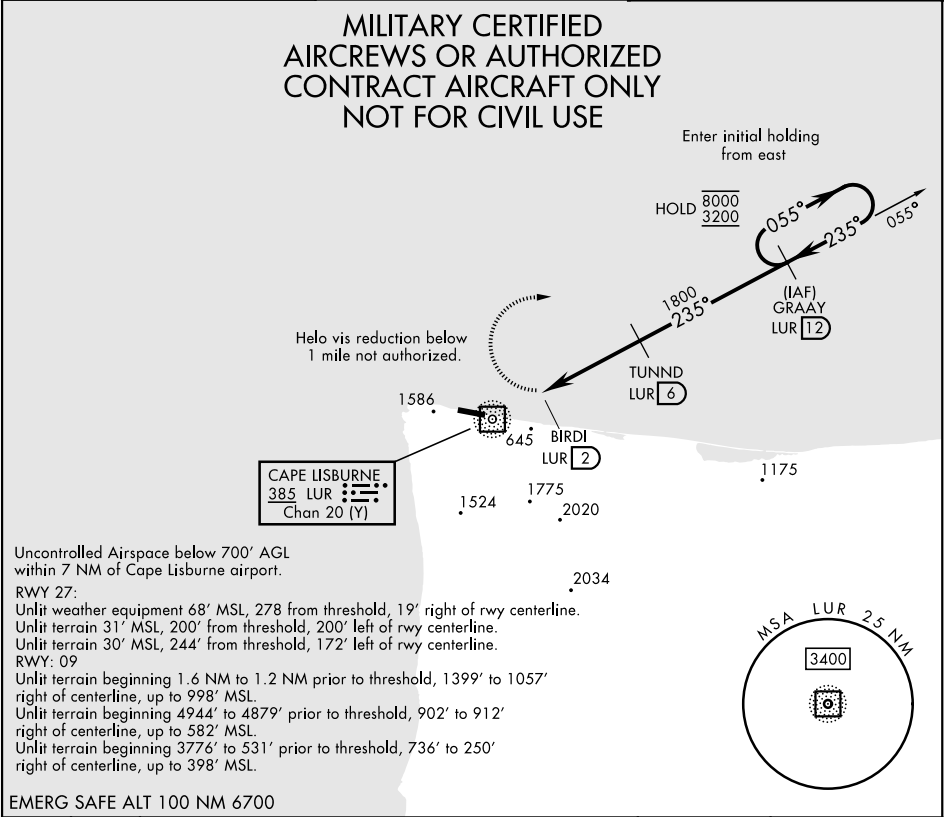


NDB/DME LUR <b>385</b> Chan <b>20</b> (Y)	APCH CRS <b>235°</b>	Rwy Idg THRE Arpt Elev <b>4800</b> <b>N/A</b> <b>14</b>	[USAF]	CAPE LISBURNE LRRS (PALU)
---	-------------------------	--	--------	---------------------------

<b>▼</b> *Circling not authorized S of Rwy 9-27. Night operations not authorized.	MISSED APPROACH: Climbing right turn to 3200, intercept LUR 055° bearing to GRAAY and hold.
--	--

ANCHORAGE CENTER <b>119.65 363.25</b>	KOTZEBUE RADIO ★ <b>122.3</b>	CTAF <b>126.2</b>
--	----------------------------------	----------------------



3200 GRAAY LUR 055° 12	ELEV 14
GRAAY LUR 12 One Minute Holding Pattern	
055° 8000 235° 3200	
TUNND LUR 6 1800	
2 NM 4 NM	
LUR NDB/DME BIRDI LUR 2	
CATEGORY	A B C D
CIRCLING*	1320-3 1306 (1400-3) NA
REIL Rwy 9 and 27	