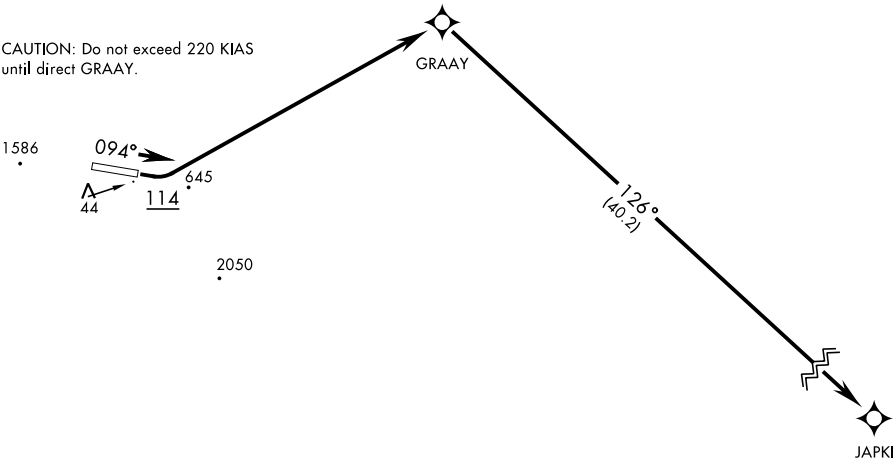


ANCHORAGE CENTER		RNAV1 - GPS		Rwy	Knots	60	120	180	240	300	360
119.65 363.25				9	V/V(fpm)	362	724	1086	1448	1810	2172
KOTZEBUE RADIO ★				Minimum climb gradient to 600							
122.3											
CTAF											
126.2											

NOT FOR CIVIL USE

FOR USE BY MILITARY CERTIFIED
AIRCREWS OR AUTHORIZED
CONTRACT AIRCRAFT ONLY

CAUTION: Do not exceed 220 KIAS
until direct GRAAY.



WARNING: High terrain within 2 NM
of departure end of runway. Prompt
compliance with departure instructions
is essential to flight safety. Do not delay
initial turn at 114°.

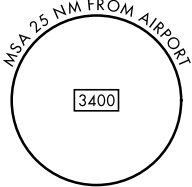
Night operations not authorized.

Procedure NA for CAT E aircraft.

Uncontrolled Airspace below 700' AGL
within 7 NM of Cape Lisburne airport.

Takeoff minimums: Rwy 9, standard with
minimum climb or 362ft/NM to 600'.

Use of T228 airway requires aircraft to be
equipped with TSO-145a/146a capability.



DEPARTURE ROUTE DESCRIPTION

TAKEOFF RWY 9: Climb on heading 094° to 114, then climbing left turn direct GRAAY, then
track 126° to JAPKI, maintain 8000 or as assigned by ATC.

TAKEOFF RWY 27: NOT AUTHORIZED