

CAPE ROMANZOF, ALASKA

RNAV (GPS) RWY 2

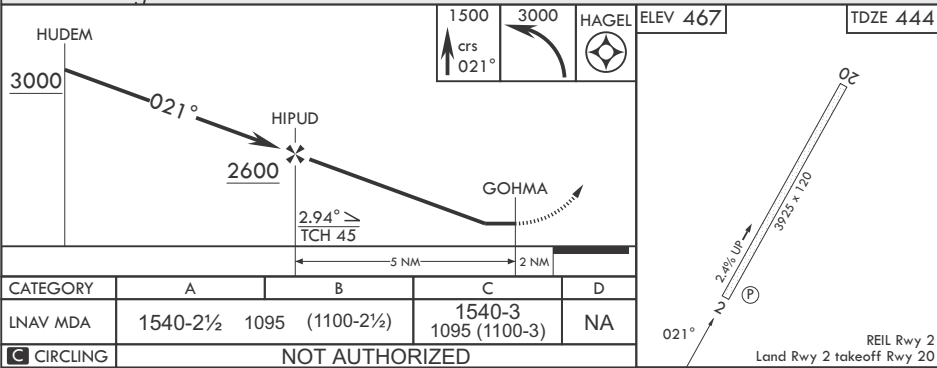
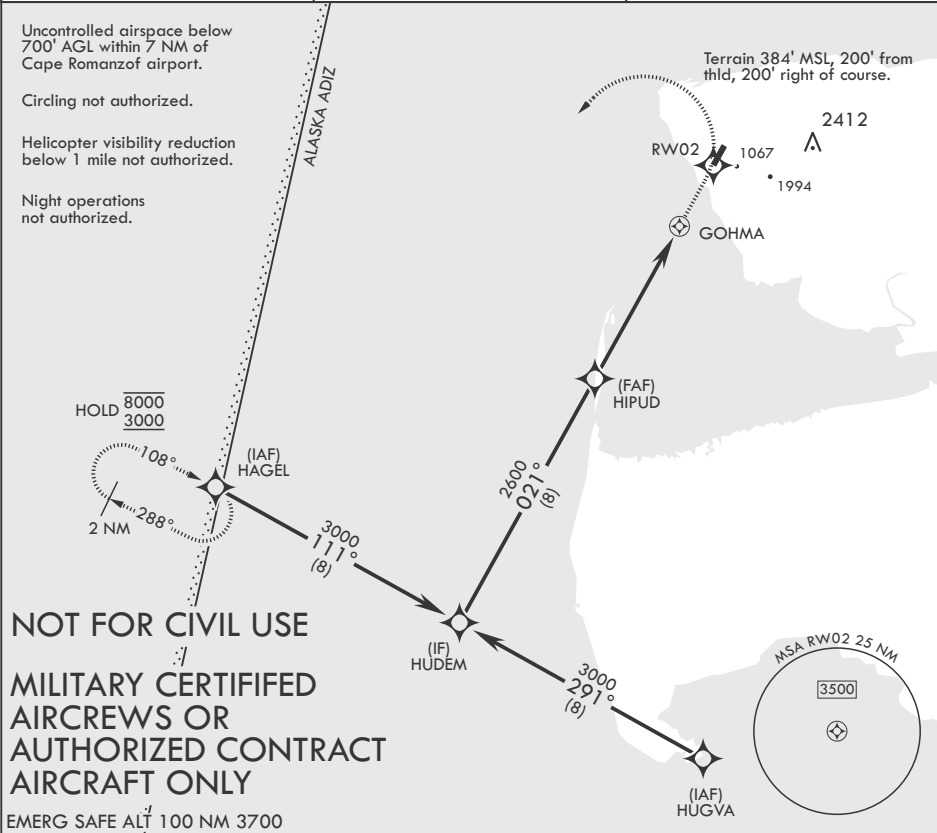
APCH CRS	Rwy Idg	3925
021°	TDZE	444
	Arpt Elev	467

- (USAF)

CAPE ROMANZOF LRRS (PACZ)

RNP APCH-GPS	MISSED APPROACH: Climb to 1500 then climbing left turn to 3000 direct HAGEL and hold.
--------------	---------------------------------------------------------------------------------------

ANCHORAGE CENTER 124.5 266.8	CTAF 126.2	KENAI RADIO 122.1
---------------------------------	---------------	----------------------



CAPE ROMANZOF, ALASKA

61°47'N - 166°02'W

CAPE ROMANZOF LRRS (PACZ)

Orig 11JUL24

RNAV (GPS) RWY 2

AK, 07 AUG 2025 to 02 OCT 2025

AK, 07 AUG 2025 to 02 OCT 2025