

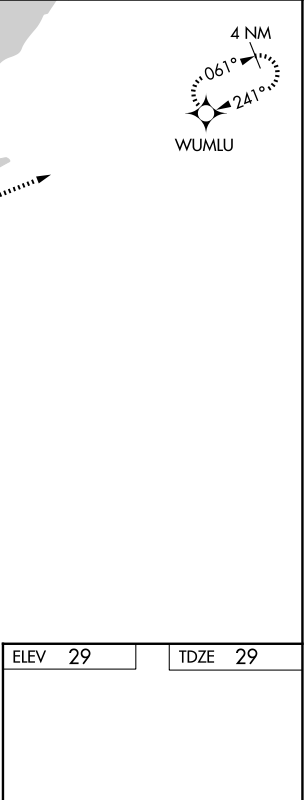
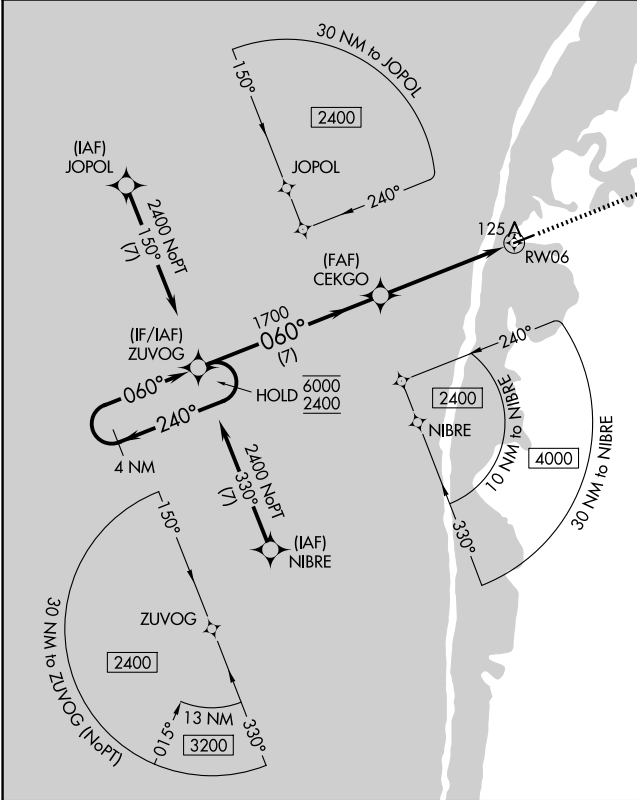
APP CRS	Rwy Ldg	4500
060°	TDZE	29
	Apt Elev	29

RNAV (GPS) RWY 6
POINT LAY LRRS (PIZ) (PPIZ)

RNP APCH - GPS.
33 -33°C When local altimeter setting not received, procedure NA.

MISSED APPROACH: Climb to 2400 direct WUMLU and hold.

AWOS-3P 135.65	ANCHORAGE CENTER 119.65 363.25	BARROW RADIO 122.4	CTAF 122.8
-------------------	-----------------------------------	-----------------------	---------------



ZUVOG		CEKGO		2400	WUMLU
4 NM Holding Pattern					
6000 ← 240°		060° →			
2400		1700			
		3.00° TCH 35			
		1 NM to RWY 06			
		RWY 06			
		7 NM		4.2 NM	1 NM
CATEGORY	A	B	C	D	
LNVA MDA	380-1 351 (400-1)			NA	
CIRCLING	440-1 411 (500-1)	480-1 451 (500-1)	480-1½ 451 (500-1½)	NA	

