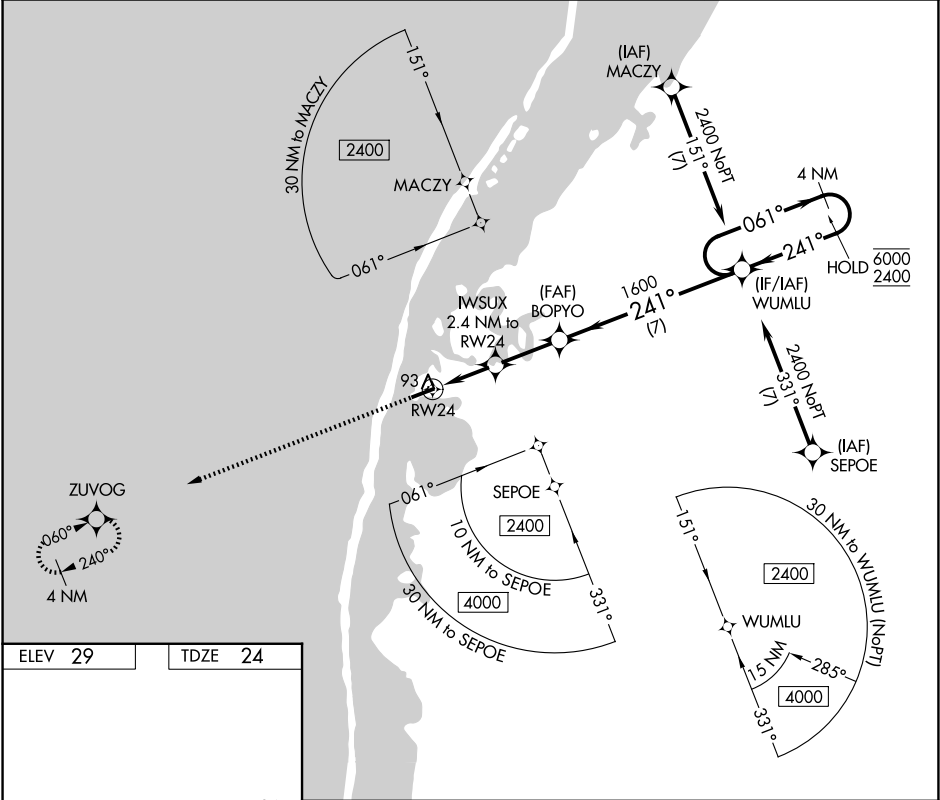


APP CRS	Rwy Ldg	4500
241°	TDZE	24
	Apt Elev	29

RNAV (GPS) RWY 24
POINT LAY LRRS (PIZ)(PPIZ)

RNP APCH - GPS.	MISSED APPROACH: Climb to 2400 direct ZUVOG and hold.
33°C When local altimeter setting not received, procedure NA.	

AWOS-3P 135.65	ANCHORAGE CENTER 119.65 363.25	BARROW RADIO 122.4	CTAF 122.8
-------------------	-----------------------------------	-----------------------	---------------



2400

↑

ZUVOG

☀

IWSUX

2.4 NM to RW24

BOPYO

≤ 3.00°

TCH 35

1600

7 NM

WUMLU

4 NM Holding Pattern

061° →

6000

← 241°

2400

	1.1	1.3 NM	1.7 NM	7 NM	
CATEGORY	A	B	C	D	
LNAV MDA	400-1 376 (400-1)				NA
CIRCLING	440-1 411 (500-1)	480-1 451 (500-1)	480-1½ 451 (500-1½)		NA

MIRL Rwy 6-24

REIL Rws 6 and 24