

VOR/DME or TACAN RWY 28

VORTAC AWK <b>113.5</b> Chan <b>82</b>	APCH CRS <b>280°</b>	Rwy Idg TDZE Arpt Elev <b>9844</b> <b>20</b> <b>23</b>
--	-------------------------	---

[USAF]

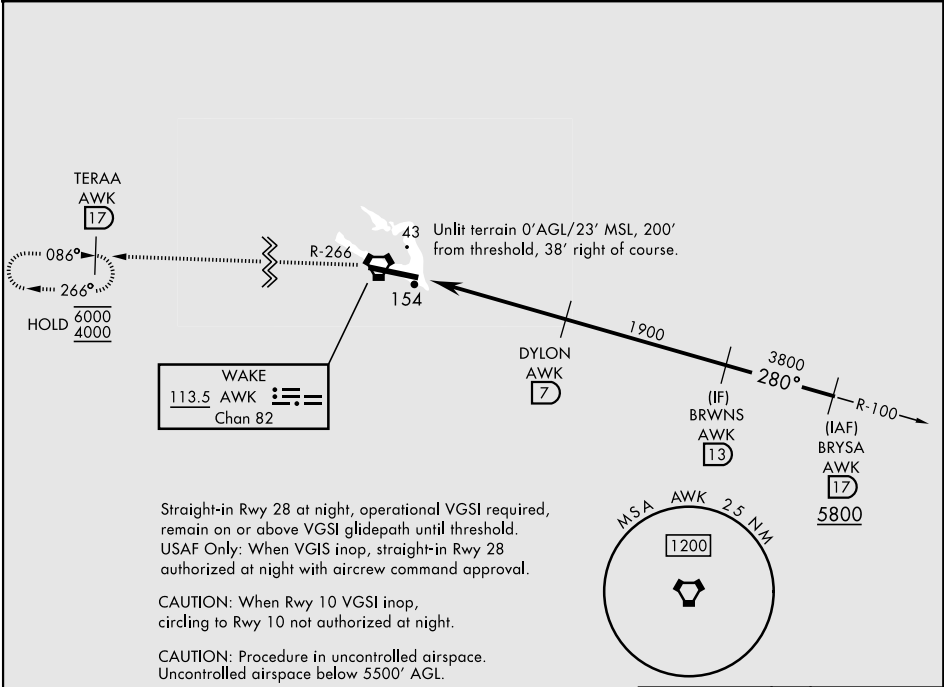
WAKE ISLAND AFLD (PWAK)

RNAV or RADAR required

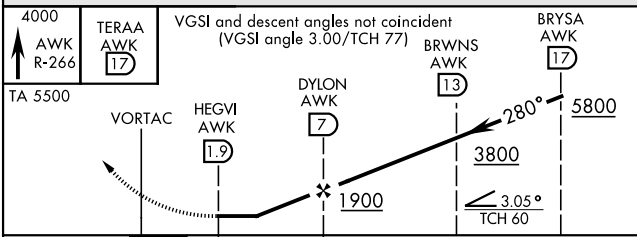
\* Circling not authorized N of Rwy 10-28.  
Rwy 28 helicopter visibility reduction below  
1 SM not authorized.

MISSED APPROACH: Climbing to 4000 on AWK VORTAC R-266  
direct TERAA and hold.

CONTACT WAKE ISLAND OPERATIONS FOR ADVISORY SERVICES  
**128.0 349.4**



EMERG SAFE ALT 100 NM 1200



CATEGORY	A	B	C	D	E
S-28	460-1	440 (500-1)	460-1¼	440 (500-1¼)	
CIRCLING*	460-1 437 (500-1)	480-1 457 (500-1)	480-1½ 457 (500-1½)	580-2 557 (600-2)	

ELEV 23	TDZE 20
---------	---------

280°

65

9844 x 150

114

154

HIRL Rwy 10-28  
REIL Rwy 10-28

VOR/DME or TACAN RWY 28

PAC, 07 AUG 2025 to 02 OCT 2025

PAC, 07 AUG 2025 to 02 OCT 2025