

VOR/DME or TACAN RWY 10

VORTAC AWK	APCH CRS	Rwy Idg	9844
113.5	086°	TDZE	23
Chan 82		Arpt Elev	23

[USAF]

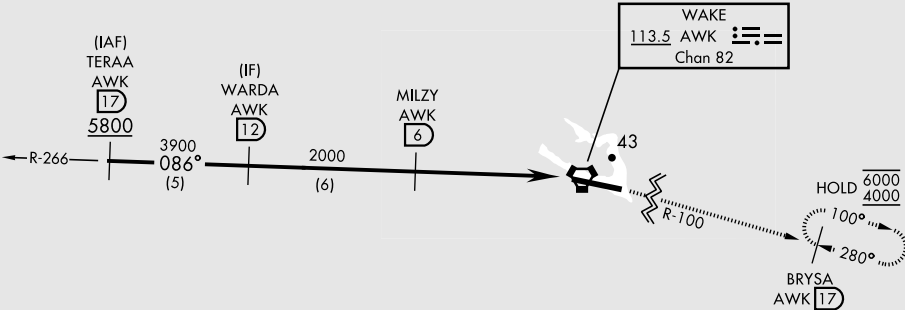
WAKE ISLAND AFLD (PWAK)

RNAV or RADAR required.

❖ * Circling not authorized N of Rwy 10-28.
Visibility reduction by helicopters not authorized.

MISSED APPROACH: Climb to 4000 on AWK VORTAC R-100
direct BRYSA and hold. Continue climb-in-hold to 4000.

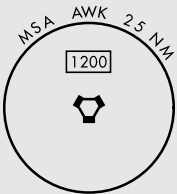
CONTACT WAKE ISLAND OPERATIONS FOR ADVISORY SERVICES
128.0 349.4



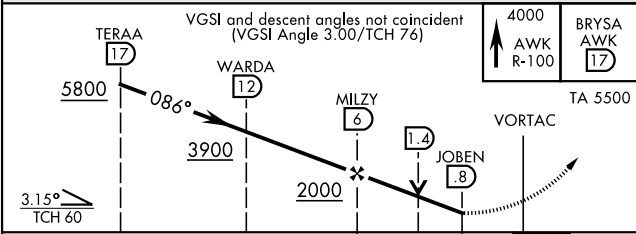
When VGSI inop, procedure not authorized at night.
USAF only: when VGSI inop, straight-in Rwy 10
authorized at night with MAJCOM A3 approval.

CAUTION: When circling to Rwy 28 at night,
operational VGSI required, remain on or above
VGSI glidepath until threshold.

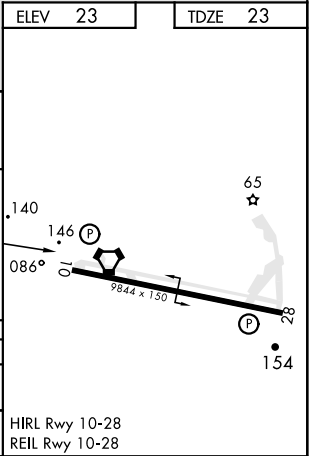
CAUTION: Procedure in uncontrolled airspace.
Uncontrolled airspace below 5500' AGL.



EMERG SAFE ALT 100 NM 1200



CATEGORY	A	B	C	D	E
S-10	460-1	437 (500-1)	460-1 1/4	437 (500-1 1/4)	
CIRCLING *	460-1 437 (500-1)	480-1 457 (500-1)	480-1 1/2 457 (500-1 1/2)	580-2 557 (600-2)	



VOR/DME or TACAN RWY 10