

WAKE ISLAND, WAKE ISLAND

RNAV (GPS) RWY 28

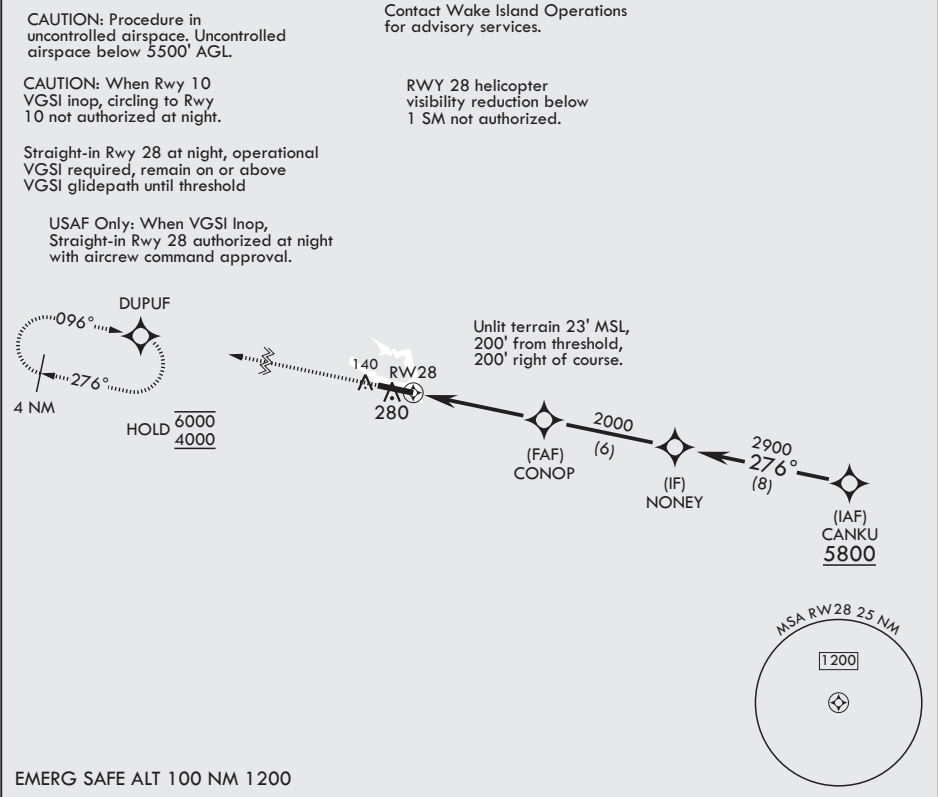
APCH CRS	Rwy Idg	9844
276°	TDZE	20
	Arpt Elev	23

- (USAF)

WAKE ISLAND AFLD (PWAK)

RNP APCH-GPS	MISSED APPROACH: Climbing to 4000 direct DUPUF and hold. Continue climb-in-hold to 4000.
* Circling not authorized N of Rwy 10-28.	

WAKE OPS
128.0 349.4



4000	DUPUF	TA 5500	VGSI and descent angles not coincident (VGSI angle 3.00/TCH 77).					NONEY	ELEV 23	TDZE 20
CATEGORY	A	B	C	D	E					
RNAV MDA	460-1	440 (500-1)	460-1½	440	(500-1½)					
CIRCLING*	460-1 437 (500-1)	480-1 457 (500-1)	480-1½ 457 (500-1½)	580-2	557 (600-2)	HIRL all Rwys REIL all Rwys				

WAKE ISLAND, WAKE ISLAND

19°17'N - 166°38'E

WAKE ISLAND AFLD (PWAK)

Amdt 3 18APR24
TERPS

RNAV (GPS) RWY 28

PAC, 07 AUG 2025 to 02 OCT 2025

PAC, 07 AUG 2025 to 02 OCT 2025