

YIGO, GUAM I, GUAM

TACAN Z RWY 06R

TACAN UAM	APCH CRS	Rwy Idg	11,200
Chan 54	060°	TDZE	557
		Arpt Elev	617

- (USAF)

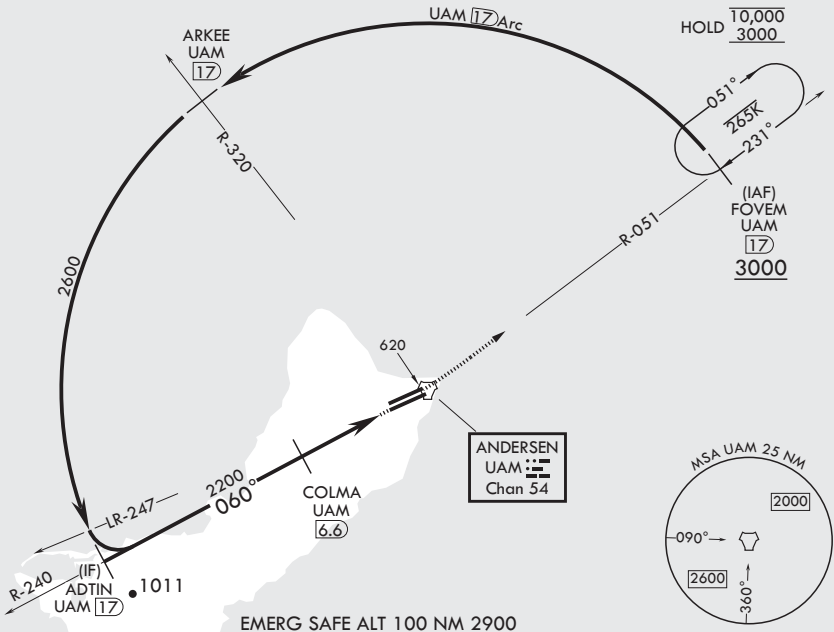
ANDERSEN AFB (PGUA)

RADAR or DME required.	ALSF-1	MISSED APPROACH: Climb to 3000, intercept UAM R-051 to FOVEM and hold.
▼ * When ALS inop, increase CAT AB RVR to 55, vis to 1 mile, CAT CDE vis to 1 3/8 miles. ** Circling not authorized NW of Rwy 06L-24R.		

ATIS 118.175 254.325	GUAM APP CON/DEP CON 119.8 269.0	TOWER 126.2 233.7	GND CON 121.7 275.8	CLNC DEL 126.725 256.7
-------------------------	-------------------------------------	----------------------	------------------------	---------------------------

CAUTION: Environmentally sensitive area flights along Andersen cliff line restricted to 1000' AGL or above.

All touchdown zones have a 1.0% down slope.



ADTIN 17	VGSI and descent angles not coincident (VGSI angle 3.00/TCH 44).	3000 UAM R-051	FOVEM UAM 17	ELEV 617	TDZE 557
2600	060°	COLMA 6.6	2200	TACAN	
3.28° TCH 43		3.4	FAXEL 2.5		
	4.1 NM	.5			
CATEGORY	A	B	C	D	E
S-6R*	1040/24 483 (500-½)		1040/50 483 (500-1)		
■ CIRCLING**	1060-1 443 (500-1)	1080-1 463 (500-1)	1240-1 623 (700-1¾)	1240-2 623 (700-2)	1240-2¼ 623 (700-2¼)
					HIRL all Rwys

YIGO, GUAM I, GUAM

13°35'N - 144°56'E

ANDERSEN AFB (PGUA)

Amdt 2 17JUN21
TERPS

TACAN Z RWY 06R

PAC, 07 AUG 2025 to 02 OCT 2025

PAC, 07 AUG 2025 to 02 OCT 2025