

YIGO, GUAM I, GUAM

TACAN Z RWY 06L

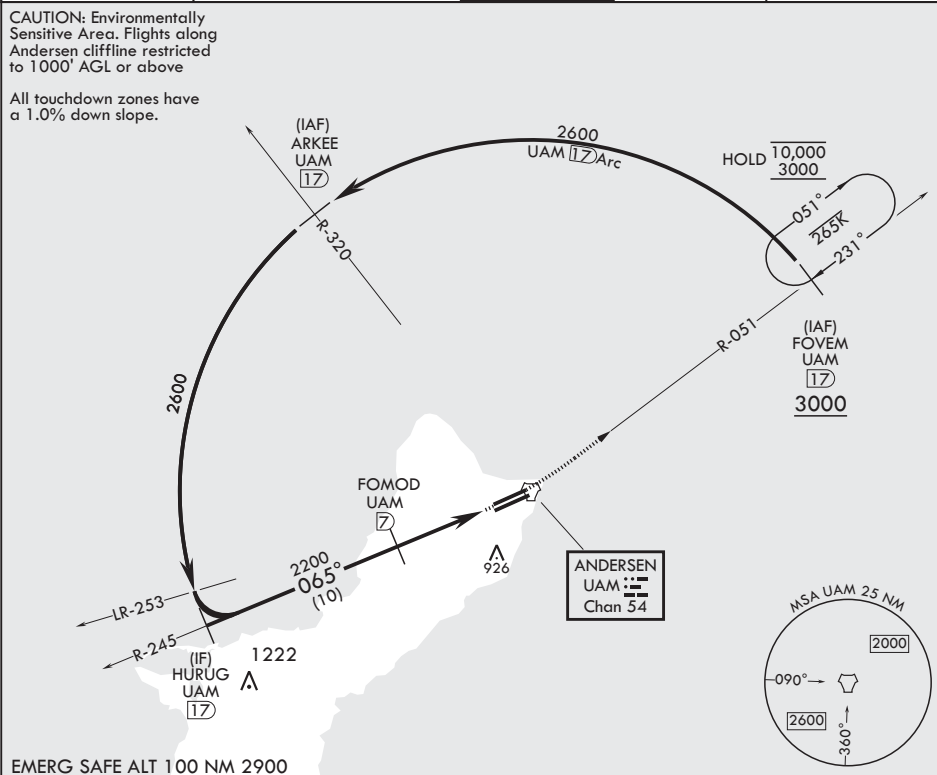
TACAN UAM Chan 54	APCH CRS 065°	Rwy Idg TDZE Arpt Elev	10,528 539 617
----------------------	------------------	------------------------------	----------------------

- (USAF)

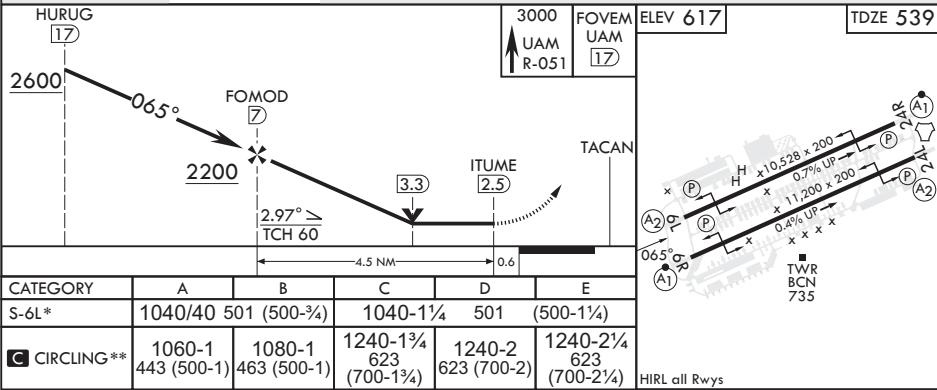
ANDERSEN AFB (PGUA)

RADAR or DME required.	SALS (A2)	MISSED APPROACH: Climb to 3000, intercept UAM R-051 to FOVEM and hold.
* When ALS inop, increase CAT AB RVR to 55, vis to 1 mile, CAT CDE vis 1 3/8 miles. ** Circling not authorized NW of Rwy 06L-24R.		

ATIS 118.175 254.325	GUAM APP CON/DEP CON 119.8 269.0	TOWER 126.2 233.7	GND CON 121.7 275.8	CLNC DEL 126.725 256.7
-------------------------	-------------------------------------	----------------------	------------------------	---------------------------



EMERG SAFE ALT 100 NM 2900



YIGO, GUAM I, GUAM

13°35'N - 144°56'E

ANDERSEN AFB (PGUA)

Amdt 3 30NOV23  
TERPS

TACAN Z RWY 06L

PAC, 07 AUG 2025 to 02 OCT 2025

PAC, 07 AUG 2025 to 02 OCT 2025