

YIGO, GUAM I, GUAM

TACAN Z RWY 24R

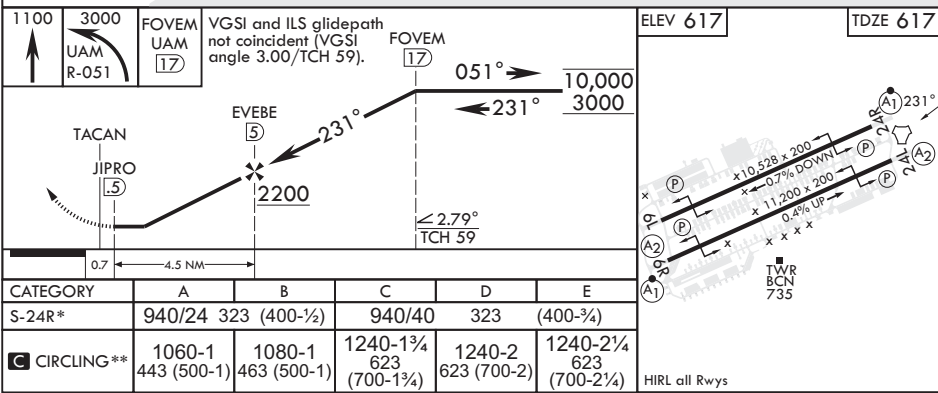
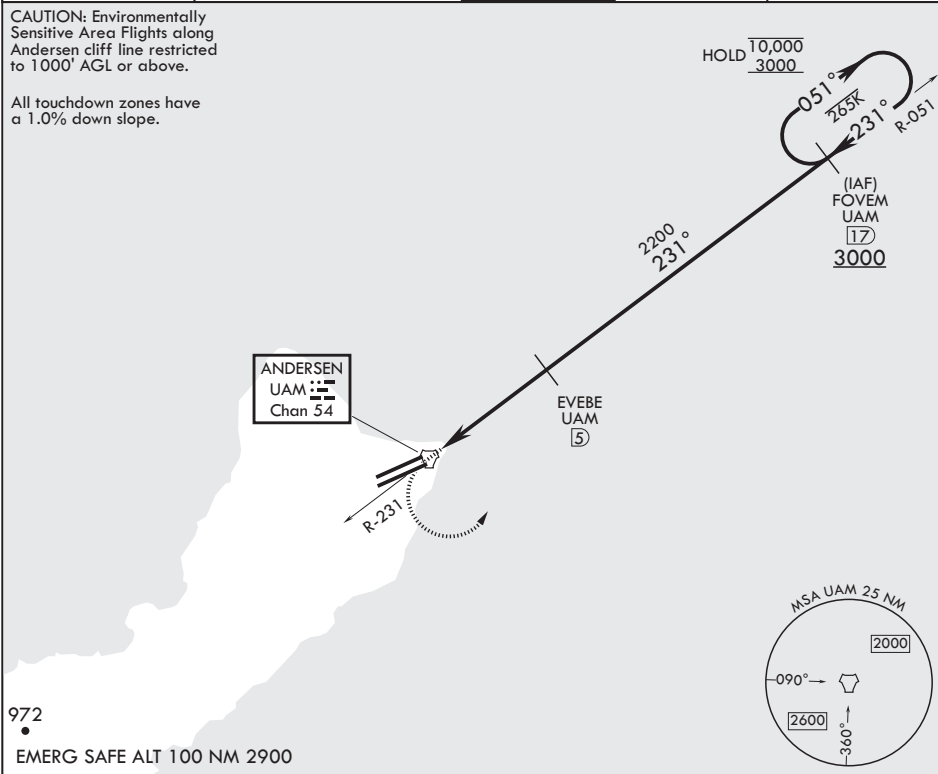
TACAN UAM Chan 54	APCH CRS 231°	Rwy Idg TDZE Arpt Elev	10,528 617 617
----------------------	------------------	------------------------------	----------------------

- (USAF)

ANDERSEN AFB (PGUA)

RADAR or DME required.	ALSIF-1 A1	MISSED APPROACH: Climb to 1100, then climbing left turn to 3000 to intercept UAM R-051 and hold.
* When ALS inop, increase CAT AB RVR to 55, vis to 1 mile; CAT CDE RVR to 50, vis to 1 mile. ** Circling not authorized NW of Rwy 06L-24R.		

ATIS 118.175 254.325	GUAM APP CON/DEP CON 119.8 269.0	TOWER 126.2 233.7	GND CON 121.7 275.8	CLNC DEL 126.725 256.7
-------------------------	-------------------------------------	----------------------	------------------------	---------------------------



YIGO, GUAM I, GUAM

13°35'N - 144°56'E

ANDERSEN AFB (PGUA)

Amdt 2 17JUN21
TERPS

TACAN Z RWY 24R

PAC, 07 AUG 2025 to 02 OCT 2025

PAC, 07 AUG 2025 to 02 OCT 2025