

YIGO, GUAM I, GUAM

TACAN Y RWY 06R

VORTAC UNZ 115.8 Chan T05	APCH CRS 054°	Rwy Idg TDZE Arpt Elev	11,200 557 617
---------------------------------	------------------	------------------------------	----------------------

- (USAF)

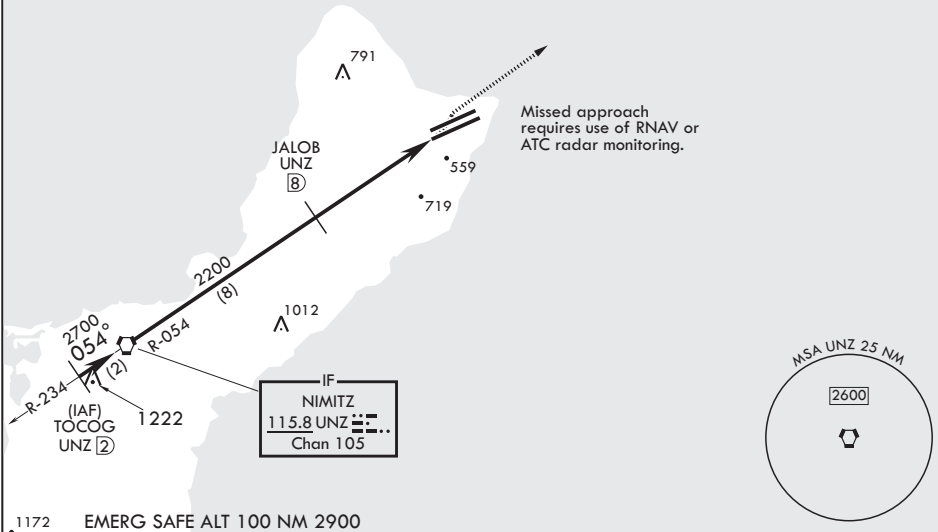
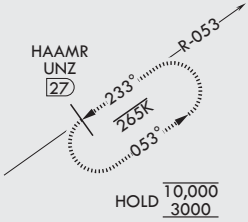
ANDERSEN AFB (PGUA)

<p>⚠ * When ALS inop, increase CAT AB RVR to 55, vis to 1 mile, CAT CDE vis to 1 3/8 miles. ** Circling not authorized NW of Rwy 6L-24R.</p>	ALS-1 	MISSED APPROACH: Climb to 3000, intercept UNZ R-053 to HAAMR and hold.
--	--	--

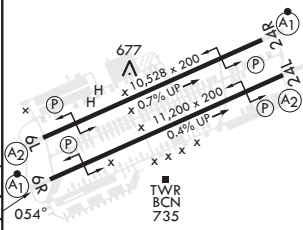
ATIS 118.175 254.325	GUAM APP CON/DEP CON 119.8 269.0	TOWER 126.2 233.7	GND CON 121.7 275.8	CLNC DEL 126.725 256.7
-------------------------	-------------------------------------	----------------------	------------------------	---------------------------

CAUTION: Environmentally Sensitive Area Flights along Anderson cliff line restricted to 1000' AGL or above.

All touchdown zones have a 1.0% down slope.



TOCOG 2700 054°	VORTAC 2700	JALOB 2200	CCOOK 11.5 12.9	3000 UNZ R-053	HAAMR UNZ 27	ELEV 617	TDZE 557
3.07° TCH 44		4.9 NM					
CATEGORY	A	B	C	D	E		
S-6R*	1060/24	503 (500-½)	1060/55	503	(500-1)		
CIRCLING**	1060-1 443 (500-1)	1080-1 463 (500-1)	1240-1 623 (700-1¾)	1240-2 623 (700-2)	1240-2 623 (700-2¼)		



YIGO, GUAM I, GUAM

13°35'N - 144°56'E

ANDERSEN AFB (PGUA)

Amdt 2 17JUN21
TERPS

TACAN Y RWY 06R

PAC, 07 AUG 2025 to 02 OCT 2025

PAC, 07 AUG 2025 to 02 OCT 2025