

YIGO, GUAM I, GUAM

TACAN Y RWY 06L

VORTAC UNZ 115.8 Chan T05	APCH CRS 053°	Rwy ldg TDZE Arpt Elev	10,528 539 617
---------------------------------	------------------	------------------------------	----------------------

- (USAF)

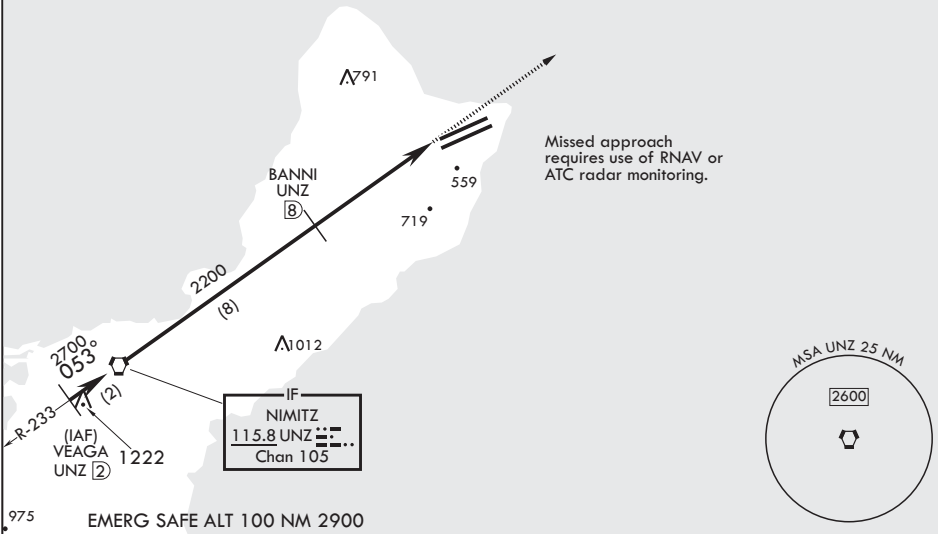
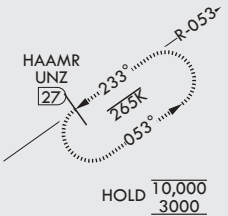
ANDERSEN AFB (PGUA)

RADAR or DME required	SALS (A2)	MISSED APPROACH: Climb to 3000, intercept UNZ R-053 to HAAMR and hold.
* When ALS inop, increase CAT AB RVR to 55 and vis to 1 mile, CAT CDE vis to 1 1/2 miles. ** Circling not authorized NW of Rwy 06L-24R.		

ATIS 118.175 254.325	GUAM APP CON/DEP CON 119.8 269.0	TOWER 126.2 233.7	GND CON 121.7 275.8	CLNC DEL 126.725 256.7
-------------------------	-------------------------------------	----------------------	------------------------	---------------------------

CAUTION: Environmentally Sensitive Area Flights along Anderson cliff line restricted to 1000' AGL or above.

All touchdown zones have a 1.0% down slope.



VEAGA UNZ 2

VORTAC

2700

053°

2700

2.99° TCH 59

2200

BANNI UNZ 8

11.6

FAYZR UNZ 12.8

4.8 NM

3000 UNZ R-053

HAAMR UNZ 27

ELEV 617

TDZE 539

677

10,528 x 200

0.7% UP

11,200 x 200

0.4% UP

TWR BCN 735

HIRL all Rwys

CATEGORY	A	B	C	D	E
S-6L*	1060/40 521 (500-¾)		1060-1¼ 521 (500-1¼)		
CIRCLING**	1060-1 443 (500-1)	1080-1 463 (500-1)	1240-1¾ 623 (700-1¾)	1240-2 623 (700-2)	1240-2¼ 623 (700-2¼)

YIGO, GUAM I, GUAM

13°35'N - 144°56'E

ANDERSEN AFB (PGUA)

Amdt 3 10AUG23
TERPS

TACAN Y RWY 06L

PAC, 07 AUG 2025 to 02 OCT 2025

PAC, 07 AUG 2025 to 02 OCT 2025