

YIGO, GUAM I, GUAM

TACAN Y RWY 24R

VORTAC UNZ 115.8 Chan T05	APCH CRS 234°	Rwy Idg TDZE Arprt Elev	10,528 617 617
---------------------------------	------------------	-------------------------------	----------------------

- (USAF)

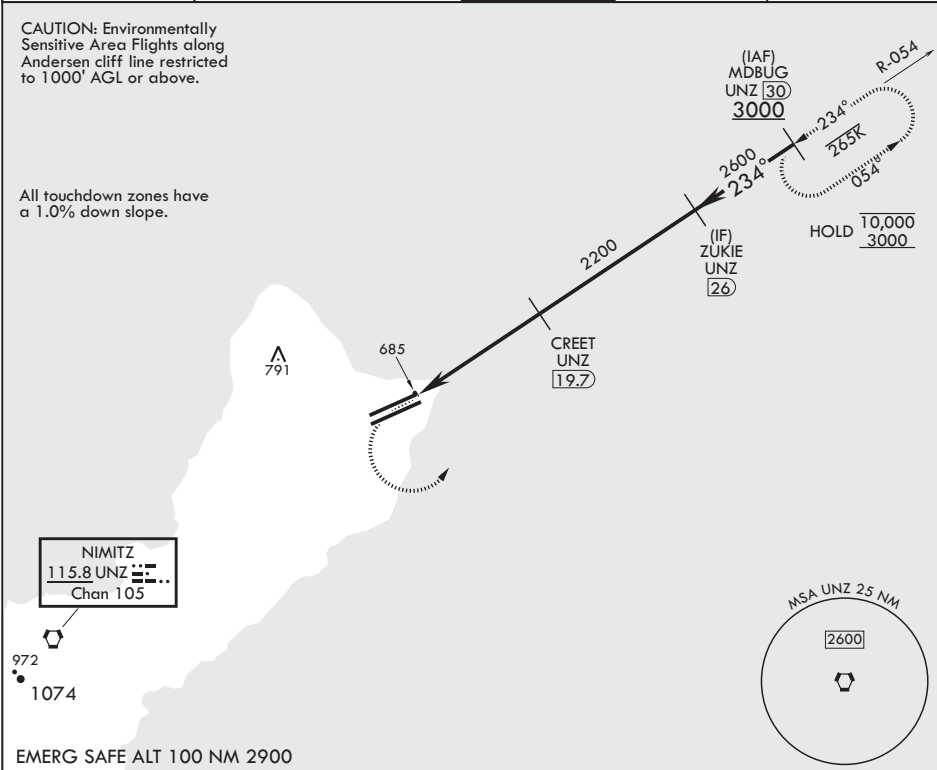
ANDERSEN AFB (PGUA)

RNAV or RADAR required for missed approach	ALSIF-1	MISSED APPROACH: Climb to 1100, then climbing left turn to intercept UNZ R-054 to MDBUG and hold.
▼ * When ALS inop increase CAT AB RVR to 55, vis to 1 mile; CAT CDE RVR to 50, vis to 1 mile. ** Circling not authorized NW of Rwy 06L-24R.	A1	

ATIS 118.175 254.325	GUAM APP CON/DEP CON 119.8 269.0	TOWER 126.2 233.7	GND CON 121.7 275.8	CLNC DEL 126.725 256.7
-------------------------	-------------------------------------	----------------------	------------------------	---------------------------

CAUTION: Environmentally Sensitive Area Flights along Andersen cliff line restricted to 1000' AGL or above.

All touchdown zones have a 1.0% down slope.



1100	3000	UNZ R-054	UNZ R-054	MDBUG 30	ELEV 617	TDZE 617
VORTAC	ENWHY 14.8	15.6	CREET 19.7	ZUKIE 26	234°	3000
			2200	2600		
			≤ 2.90° TCH 59			
			4.9 NM			
CATEGORY	A	B	C	D	E	
S-24R*	940/24	323 (400-1/2)	940/40	323	(400-3/4)	
CIRCLING**	1060-1 443 (500-1)	1080-1 463 (500-1)	1240-1 3/4 623 (700-1 3/4)	1240-2 623 (700-2)	1240-2 1/4 623 (700-2 1/4)	

HIRL all Rws

YIGO, GUAM I, GUAM

13°35'N - 144°56'E

ANDERSEN AFB (PGUA)

Amdt 3 10AUG23  
TERPS

TACAN Y RWY 24R

PAC, 07 AUG 2025 to 02 OCT 2025

PAC, 07 AUG 2025 to 02 OCT 2025