

YIGO, GUAM I, GUAM

RNAV (GPS) RWY 06L

APCH CRS	Rwy Idg	10,528
064°	TDZE	539
	Arprt Elev	617

RNP APCH

▼ * When ALS inop increase CAT AB RVR to 55, vis to 1 mile; CAT CDE vis to 1 3/8 miles.
** Circling not authorized NW of Rwy 06L-24R.
Circling not authorized to Rwys 06L and 24R.

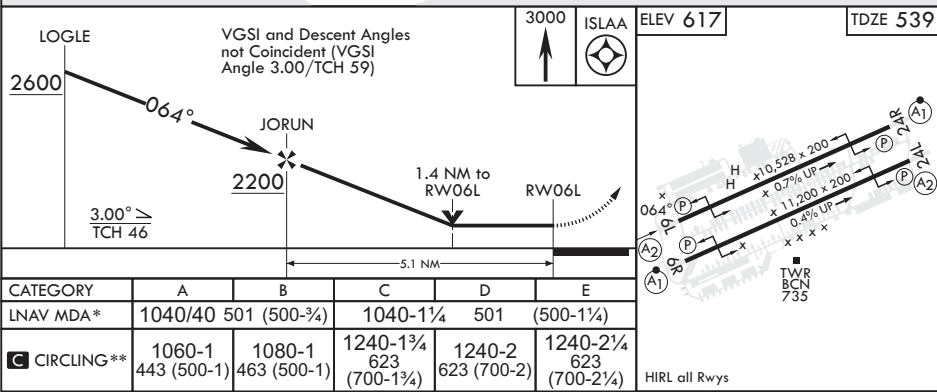
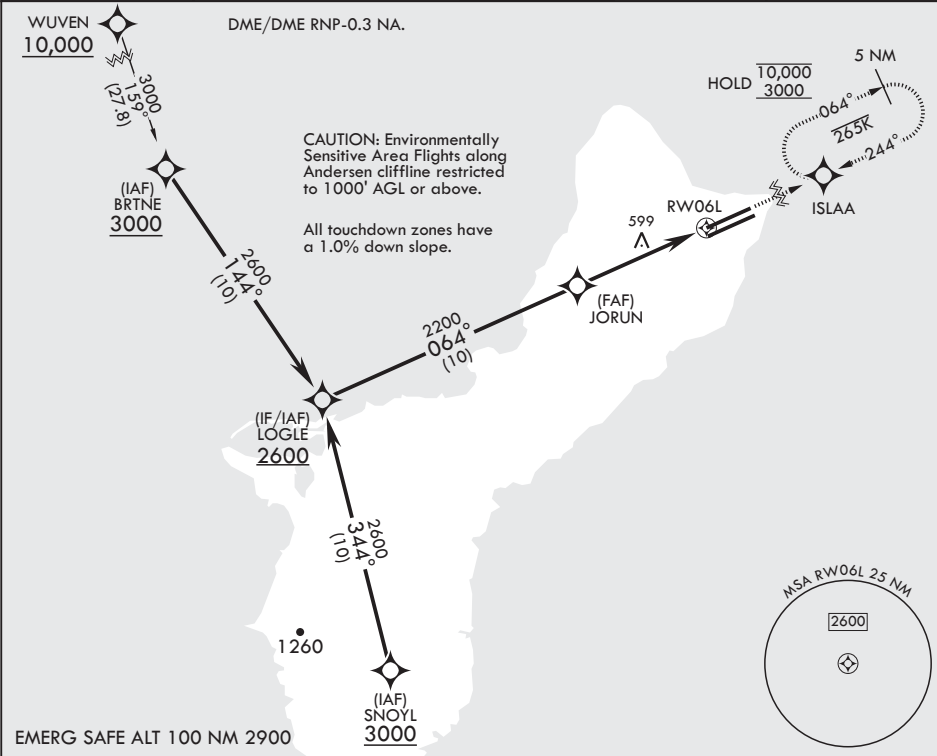
- (USAF)

ANDERSEN AFB (PGUA)

SALS
(A2)

MISSED APPROACH: Climb to 3000 direct ISLAA and hold.

ATIS	GUAM APP CON/DEP CON	TOWER	GND CON	CLNC DEL
118.175 254.325	119.8 269.0	126.2 233.7	121.7 275.8	126.725 256.7



YIGO, GUAM I, GUAM

Amdt 1 17JUN21
TERPS

13°35'N - 144°56'E

ANDERSEN AFB (PGUA)

RNAV (GPS) RWY 06L

PAC, 07 AUG 2025 to 02 OCT 2025

PAC, 07 AUG 2025 to 02 OCT 2025