

YIGO, GUAM I, GUAM

ILS Z or LOC/DME Z RWY 24R

LOC I-YIG 109.3	APCH CRS 244°	Rwy Idg TDZE Arpt Elev 10,528 617 617
---------------------------	-------------------------	---

AL-2147 [USAF]

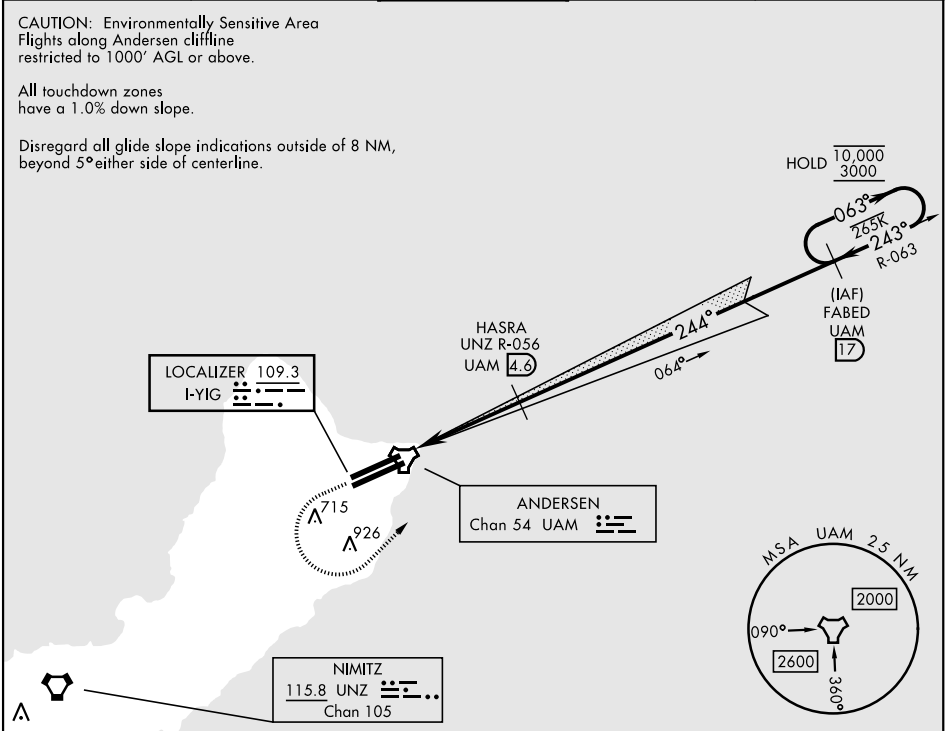
ANDERSEN AFB (PGUA)

⚠ * When ALS inop, increase RVR to 40, vis to ¾ mile.
** When ALS inop, increase RVR to 55, vis to 1 mile.
*** Circling not authorized NW of Rwy 06L-24R.

ALSF-1
(A1)

MISSED APPROACH: Climb to 1100, then climbing left turn to 3000 to intercept UAM R-063 direct FABED and hold.

ATIS 118.175 254.325	GUAM APP CON 119.8 269.0	TOWER 126.2 233.7	GND CON 121.7 275.8	CLNC DEL 126.725 256.7
--------------------------------	------------------------------------	-----------------------------	-------------------------------	----------------------------------



ELEV 617		TDZE 617	
1100 ↑ UAM R-063		FABED UAM 17	
INIME UAM 0.5		HASRA UAM 4.6	
0.7 NM		4.1 NM	
CATEGORY		A	
S-ILS 24R*		817/24 200 (200-½)	
S-LOC 24R**		940/24 323 (400-½)	
***		1060-1 1080-1 1240-1 1240-2 1240-2 ¼	
CIRCLING		443 (500-1) 463 (500-1) 623 (700-1 ¾) 623 (700-2) 623 (700-2 ¼)	
HIRL all rwys			

YIGO, GUAM I, GUAM

13° 35' N-144° 56' E

ANDERSEN AFB (PGUA)

Orig 12AUG21
TERPS

ILS Z or LOC/DME Z RWY 24R

PAC, 07 AUG 2025 to 02 OCT 2025

PAC, 07 AUG 2025 to 02 OCT 2025