

YIGO, GUAM I, GUAM

ILS Z or LOC/DME Z RWY 24L

LOC I-PMY 110.1	APCH CRS 244°	Rwy Idg 11,200 TDZE 607 Arpt Elev 617
---------------------------	-------------------------	--

AL-2147 [USAF]

ANDERSEN AFB (PGUA)

- ▼ * When ALS inop, increase RVR to 45, vis to ½ mile.
** When ALS inop, increase CAT AB RVR to 55, vis to 1 mile;
CAT CDE RVR to 50, vis to 1 mile.
*** Circling not authorized NW of Rwy 06L-24R.

SALS
(A2)

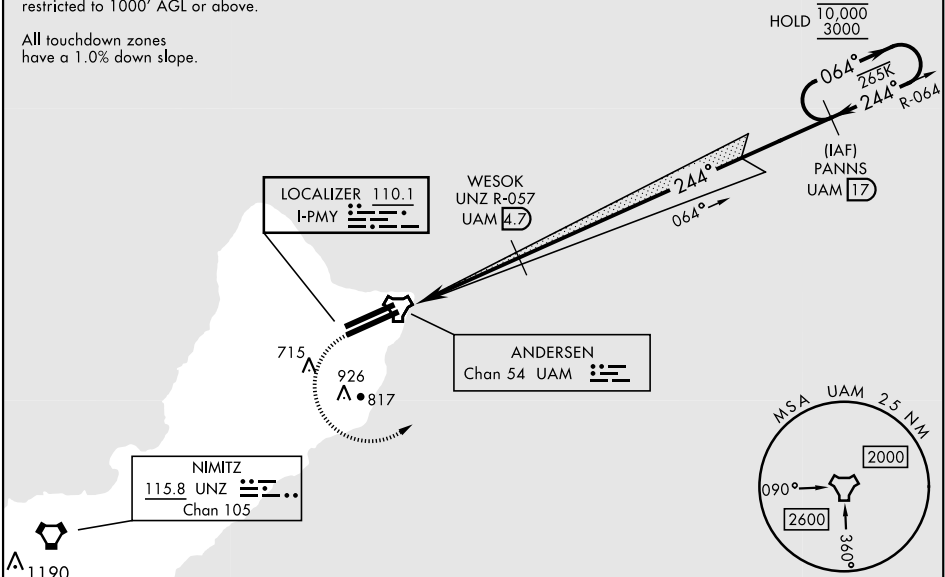
MISSED APPROACH: Climb to 1200, then climbing left turn to 3000 to intercept UAM R-064 direct PANNS and hold.

ATIS 118.175 254.325	GUAM APP CON 119.8 269.0	TOWER 126.2 233.7	GND CON 121.7 275.8	CLNC DEL 126.725 256.7
--------------------------------	------------------------------------	-----------------------------	-------------------------------	----------------------------------

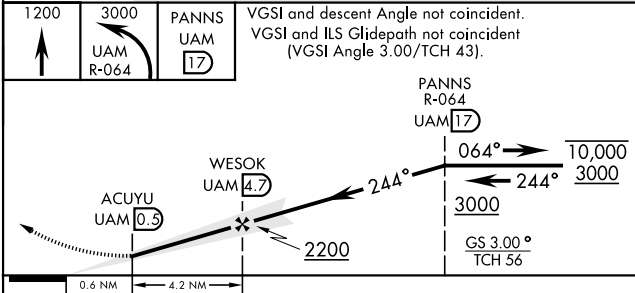
CAUTION: GS unusable below 900' MSL/300' AGL due to runway supervisory unit.

CAUTION: Environmentally Sensitive Area
Flights along Andersen cliffline restricted to 1000' AGL or above.

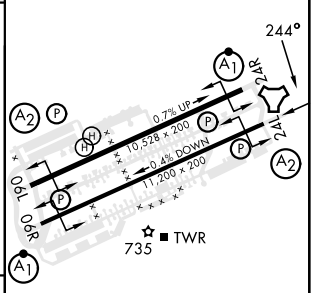
All touchdown zones have a 1.0% down slope.



EMERG SAFE ALT 100 NM 2900



ELEV 617	TDZE 607
----------	----------



CATEGORY	A	B	C	D	E
S-ILS 24L*	900/40		293	(300-¾)	
S-LOC 24L**	940/40	333 (400-¾)	940/45	333 (400-¾)	
*** CIRCLING	1060-1	1080-1	1240-1¾	1240-2	1240-2¼
	443 (500-1)	463 (500-1)	623 (700-1¾)	623 (700-2)	623 (700-2¼)

HIRL all rwy's

YIGO, GUAM I, GUAM

13° 35' N-144° 56' E

ANDERSEN AFB (PGUA)

Orig 12AUG21
TERPS

ILS Z or LOC/DME Z RWY 24L

PAC, 07 AUG 2025 to 02 OCT 2025

PAC, 07 AUG 2025 to 02 OCT 2025