

YIGO, GUAM I, GUAM

HI-ILS Y or LOC/DME Y RWY 06L

LOC I-AND <u>109.3</u>	APCH CRS 064°	Rwy Idg 10,528 TDZE 539 Arpt Elev 617
----------------------------------	-------------------------	--

AL-2147 [USAF]

ANDERSEN AFB (PGUA)

ATC RADAR monitoring required.

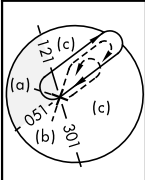
T * When ALS inop, increase CAT AB RVR to 55, vis to 1 mile; CAT CDE vis to 1 3/8 miles.
** Circling not authorized NW of Rwy 06L-24R.

SALS



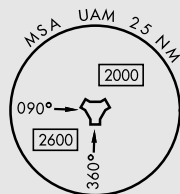
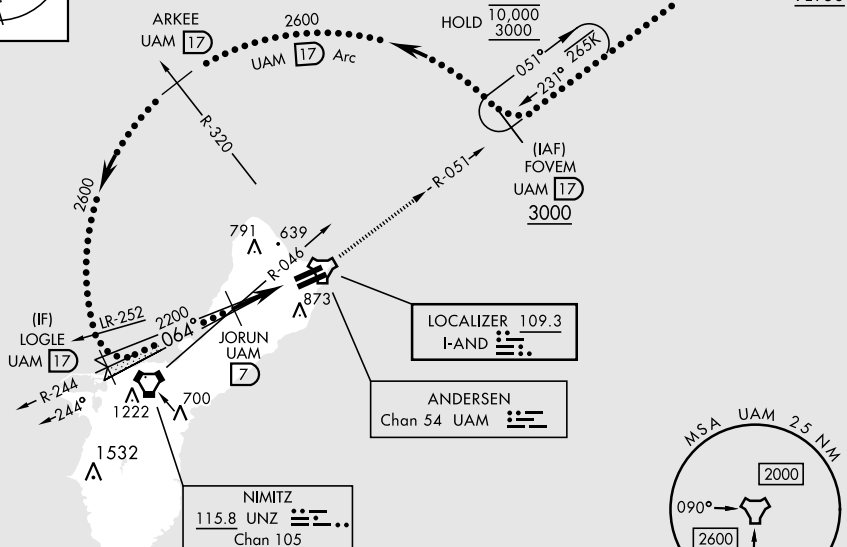
MISSED APPROACH: Climb to 3000, intercept UAM R-051 to FOVM and hold.

ATIS	GUAM APP CON	TOWER	GND CON	CLNC DEL
118.175 254.325	119.8 269.0	126.2 233.7	121.7 275.8	126.725 256.7

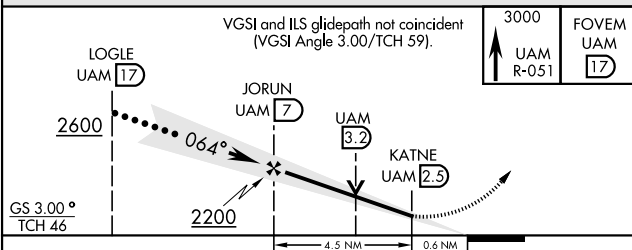


CAUTION: Environmentally sensitive area
flights along Andersen cliffline restricted
to 1000' AGL or above.

All touchdown zones have a 1.0% down slope.

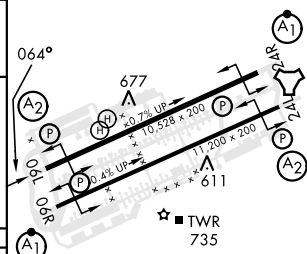


EMERG SAFE ALT 100 NM 2900



CATEGORY	A	B	C	D	E
S-ILS 06L	739/40		200	(200-¾)	
S-LOC 06L*	1020/40	481 (500-¾)	1020/60		481 (500-1½)
CIRCLING**	1060-1	1080-1	1240-1¾	1240-2	1240-2½
	443 (500-1)	463 (500-1)	623 (700-1¾)	623 (700-2)	623 (700-2½)

ELEV	617		TDZE	539
------	-----	--	------	-----



HIRL all rwys

Y|GO, GUAM |, GUAM

13° 35'N-144° 56'E

ANDERSEN AFB (PGUA)

Orig 12AUG21
TERPS

HI-ILS Y or LOC/DME Y RWY 06L